
Volvo Retail Sustainable Experience
(VRSE) Showroom Concept

Sales - Room Datasheets
Generic VRSE Concept
UK Equivalent (VRSE) Specification

Version no.
18

Document no.
3 of 4

Prepared by Meda
www.experiencemeda.com
The Granary, Church Lane
Steventon, Oxfordshire
OX13 6SW

Issued by Volvo Car UK.
For additional copies of this Datasheet,
a copy of the full NBS Specifications
or to report any discrepancy, please
email james@experiencemeda.com



Sales

Do not scale from these drawings

Outline Specifications Datasheets

Contents

<p>4.1 Introduction to the Sales Outline Specifications Comprising:</p> <p>4.1.1 Introduction to the VRSE Scheme</p> <p>4.1.2 VRSE Planning Principles - ground floor</p> <p>4.1.3 VRSE Planning Principles - mezzanine</p> <p>4.1.4 VRSE Planning Principles - external elevations</p> <p>4.1.5 VRSE Planning Principles - internal elevations</p> <p>4.1.6 VRSE Planning Principles - site plan</p> <p>4.1.7 VRSE Planning Principles - parking bay types</p> <p>4.1.8 VRSE Planning Principles - ground floor layout</p> <p>4.1.9 VRSE Planning Principles - The Street layout</p> <p>4.1.10 VRSE Planning Principles - The Living Room layout</p> <p>4.1.11 VRSE Planning Principles - first floor layout</p>	<p>4.2 Generic planning and finishes Comprising:</p> <p>4.2.1 Sales external finishes</p> <p>4.2.2 A. Internal finishes</p> <p>4.2.3 B. Internal finishes</p> <p>4.3 External Details Comprising:</p> <p>4.3.1 Shop Windows</p> <p>4.3.2 Customer entrance</p> <p>4.4 Internal Sales Details Comprising:</p> <p>4.4.1 Host Reception</p> <p>4.4.2 The Scandinavian Group</p> <p>4.4.3 Customer toilets</p> <p>4.4.4 Consultation Rooms</p> <p>4.4.5 The Living Room</p> <p>4.4.6 Clean Water Station / Coffee Point</p> <p>4.4.7 Lifestyle Shop</p> <p>4.4.8 Consultation Points</p> <p>4.4.9 Typical offices</p> <p>4.4.10 Sales Consultants' Office</p> <p>4.4.11 Car Delivery Bay</p> <p>4.4.12 Front of house kitchen facilities</p> <p>4.4.13 Front of house staircase</p>	<p>4.5 Internal staff area details Comprising:</p> <p>4.5.1 Staff toilets</p> <p>4.5.2 Staff and Technicians' canteen</p> <p>4.5.3 eLearning Room</p> <p>4.5.4 Typical office</p> <p>4.5.5 Meeting room</p> <p>4.5.6 Typical Manager's office</p> <p>4.5.7 Cleaner's cupboard</p> <p>4.5.8 Back of House typical staircase</p>
--	--	---



Section 4.1

Introduction



4.1 Introduction

Do not scale from these drawings

4.1.1 Introduction to the VRSE Scheme



Introduction

Supporting your VRSE Retailer scheme

These Sales - Room Datasheets have been prepared in order to support you in the development and delivery of your VRSE Retailer scheme.

The Datasheets are intended as an 'illustrated guide' to the areas and rooms of the Afterales areas and should always be read in conjunction with the Outline Specifications documents and the Outline Specifications Appendices (which can be found online.)

Please note that this document covers all aspects of the Aftersales operations in relation to Workshops and VPS (Volvo Personal Service).

Please note that these documents will be updated as and when required.

Always look for the version number, to ensure you have the current issue.

All the latest versions are available at

https://experiencemeda.com/VCUK_VRSE_Specifications/

- Outline Specifications - New Build
- Outline Specifications - Refurbishment
- Outline Specifications - Supplier Appendices
- Sales - Room Datasheets
- Aftersales - Room Datasheets.

Important!
Our standards are being updated!

All our specifications are constantly working to develop and improve all of our specifications. So as we can ensure you're always kept up to date with any modifications please email your VCUK contact directly if you wish to download any of the current versions. All of the documentation here has currently been locked and cannot be accessed.

[ADVISE ME ON UPDATES](#)

Outline Specification Downloads

Select the Specifications you need here:

1-2. VRSE Outline Specifications	3. Outline Specifications Appendices	4. Sales - Room Datasheets	5. Aftersales - Room Datasheets
For 'New Build' projects: PENDING UPDATE	VCUK-Approved Supplier Appendix downloads are now available as individual files so as you can easily find specific details. PENDING UPDATE	Supporting your Showroom scheme, a Sales Outline Specification for the development and delivery of your VRSE Showroom scheme. PENDING UPDATE	Supporting your Workshop scheme, an Aftersales Outline Specification for the development and delivery of your VPS Workshop scheme. PENDING UPDATE

Supporting Documents.

In addition to the Specifications, you might also find the following background documents useful, as reference points:



4.1 Introduction

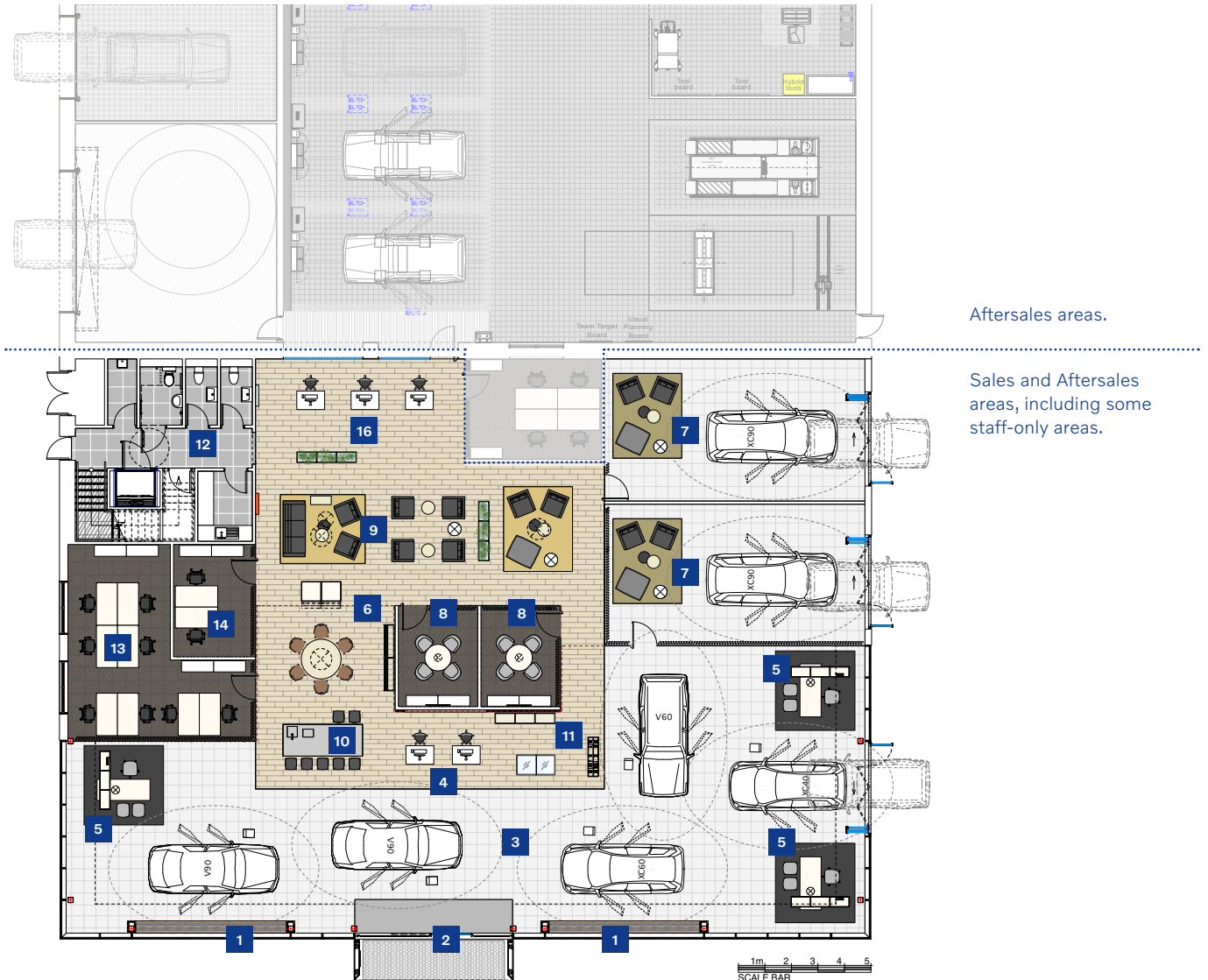
Do not scale from these drawings

4.1.2 VRSE Planning Principle - ground floor

The VRSE Interior Planning Principles

Plan illustration.

Not to scale



Aftersales areas.

Sales and Aftersales areas, including some staff-only areas.

VRSE Areas

The Outline Specification covers all aspects of the Retailer's Sales and Aftersales customer-facing areas.

While these are probably very familiar, within the VRSE design are a series of set piece areas, defined by specific functional demands in the Volvo 'VCSE' Buying and Ownership Experience programme.

These areas have specific titles and equipment.

While every Retailer layout will vary, these areas are mandatory elements of any programme and will be planned for accordingly.

Key:

1. Shop Windows
2. Customer entrance
3. The Street
4. Host reception
5. Consultation Points
6. Your Car Studio
7. Car Delivery Area (with E.V. Charging Point)
8. Consultation Room
9. The Living Room
10. Clean Water Station / Coffee Point
11. Lifestyle Shop
12. Customer facilities
13. Sales office

14. Sales / Business Managers' office

15. General Manager's office (on mezzanine, not shown here)

16. Aftersales reception

NB: Please refer to document No. 4 - Aftersales - Room Datasheets, for all details regarding No. 15. Customer Services Meeting Point and No. 16. Aftersales Reception.

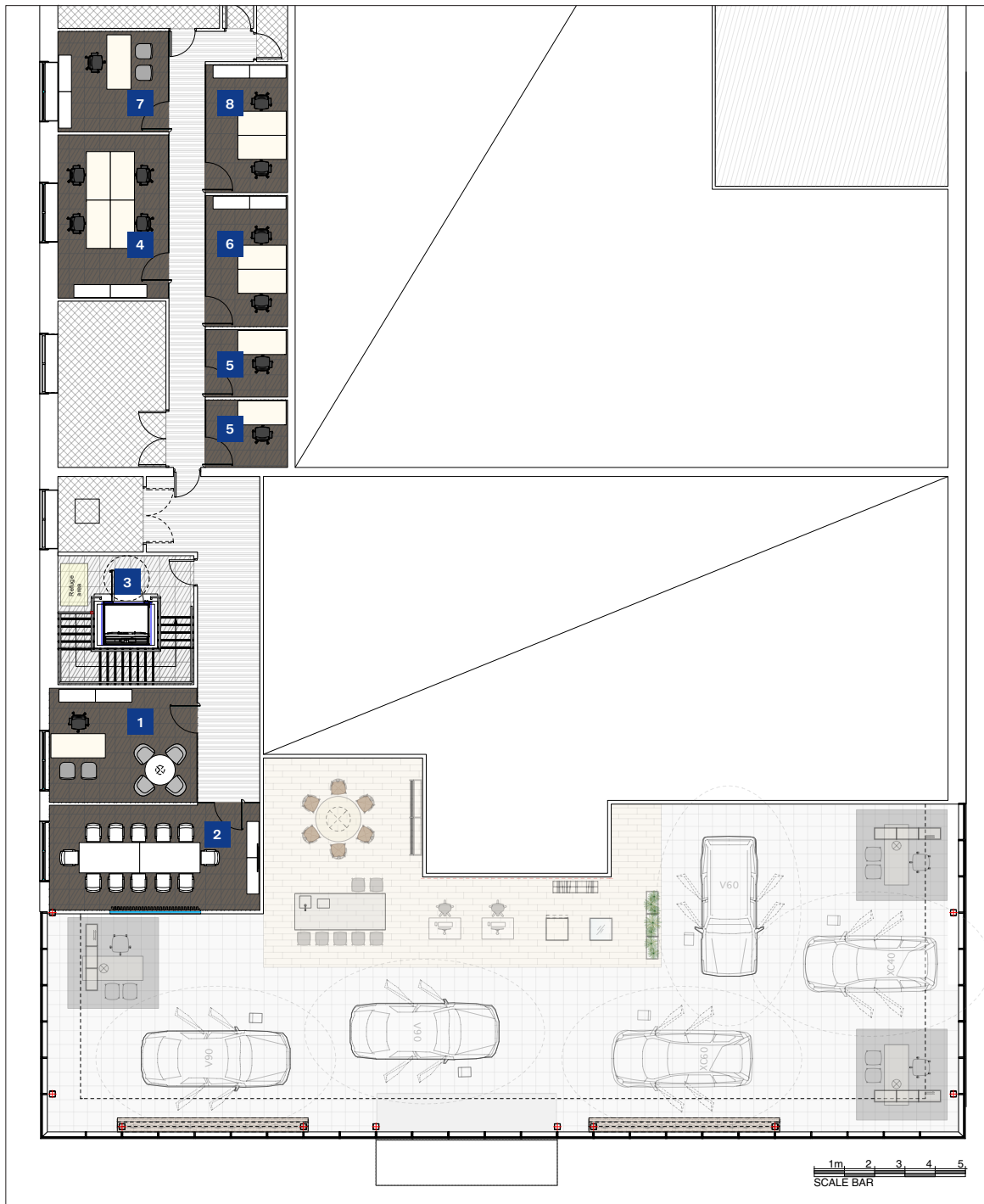


4.1 Introduction

Do not scale from these drawings

4.1.3 - VRSE Planning Principles - mezzanine

First floor areas (relevant to the generic layout site plan)



VRSE areas

The Outline Specification covers all aspects of the Retailer's Sales and Aftersales customer-facing areas.

While these are probably very familiar, within the VRSE design are a series of set-piece areas, defined by specific functional demands in the Volvo 'VCSE' Buying and Ownership Experience programme.

These areas have specific titles and equipment.

While every Retailer plan will vary, these areas are mandatory elements of any programme and will be planned for accordingly.

Key:

1. General Manager's office
2. Meeting / training room
3. Back of house stair and lift well
4. Sales, Administration and Marketing
5. e-Learning room
6. General administration office
7. Finance office
8. Accounts office

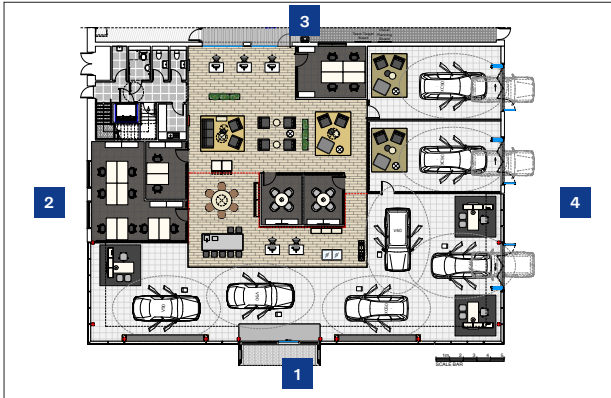


4.1 Introduction

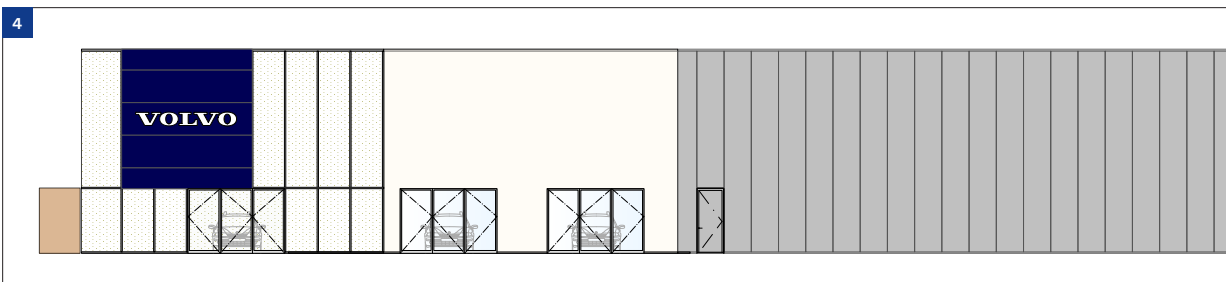
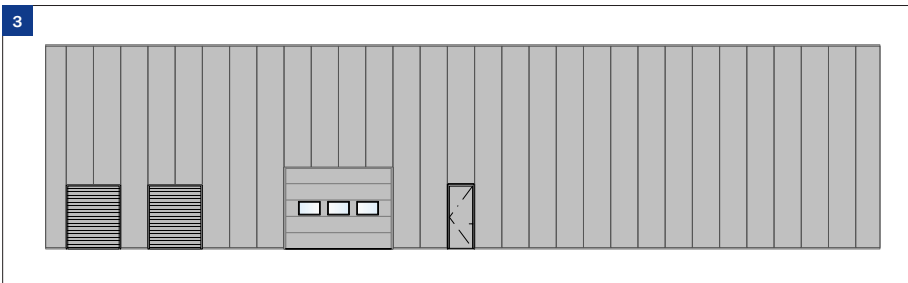
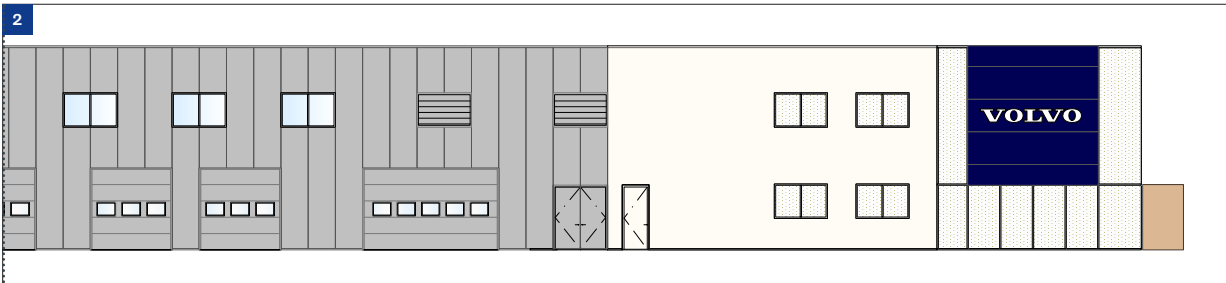
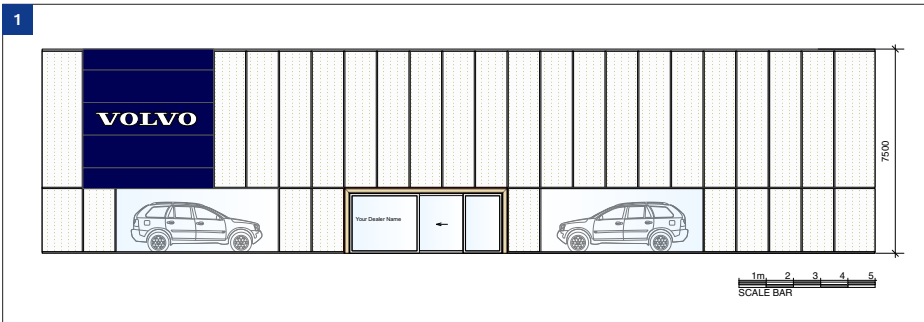
Do not scale from these drawings

4.1.4 VRSE Planning Principles - external elevations

The VRSE external elevations



Key to external elevations



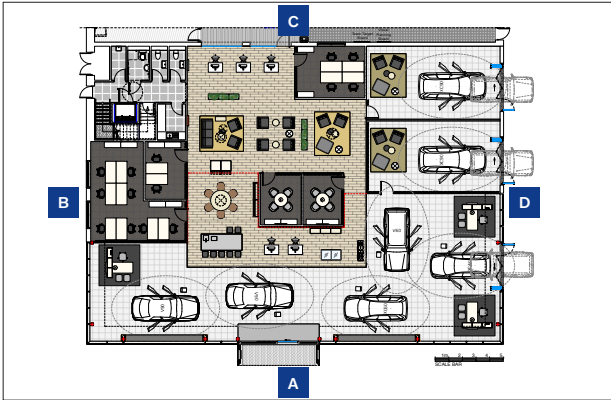


4.1 Introduction

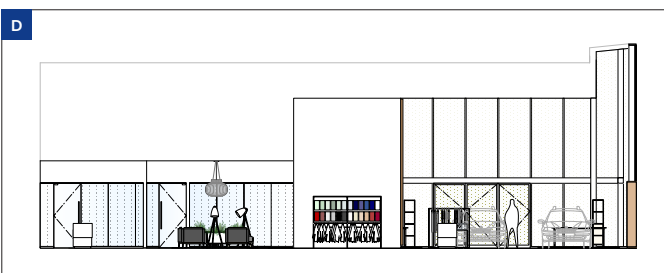
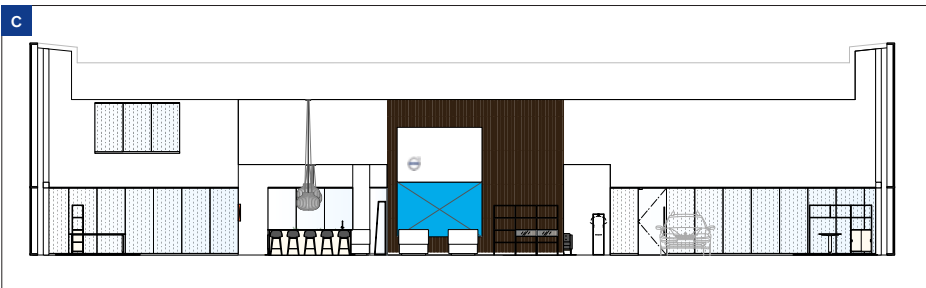
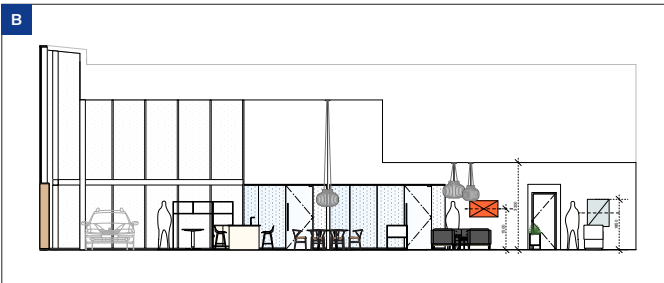
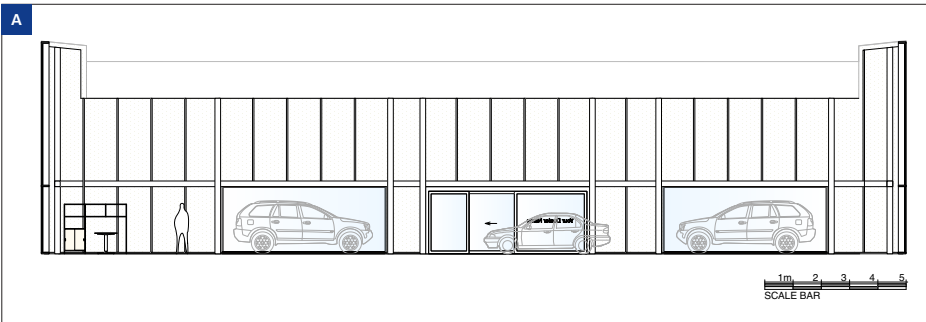
Do not scale from these drawings

4.1.5 VRSE Planning Principles - internal elevations

The VRSE internal elevations



Key to internal elevations

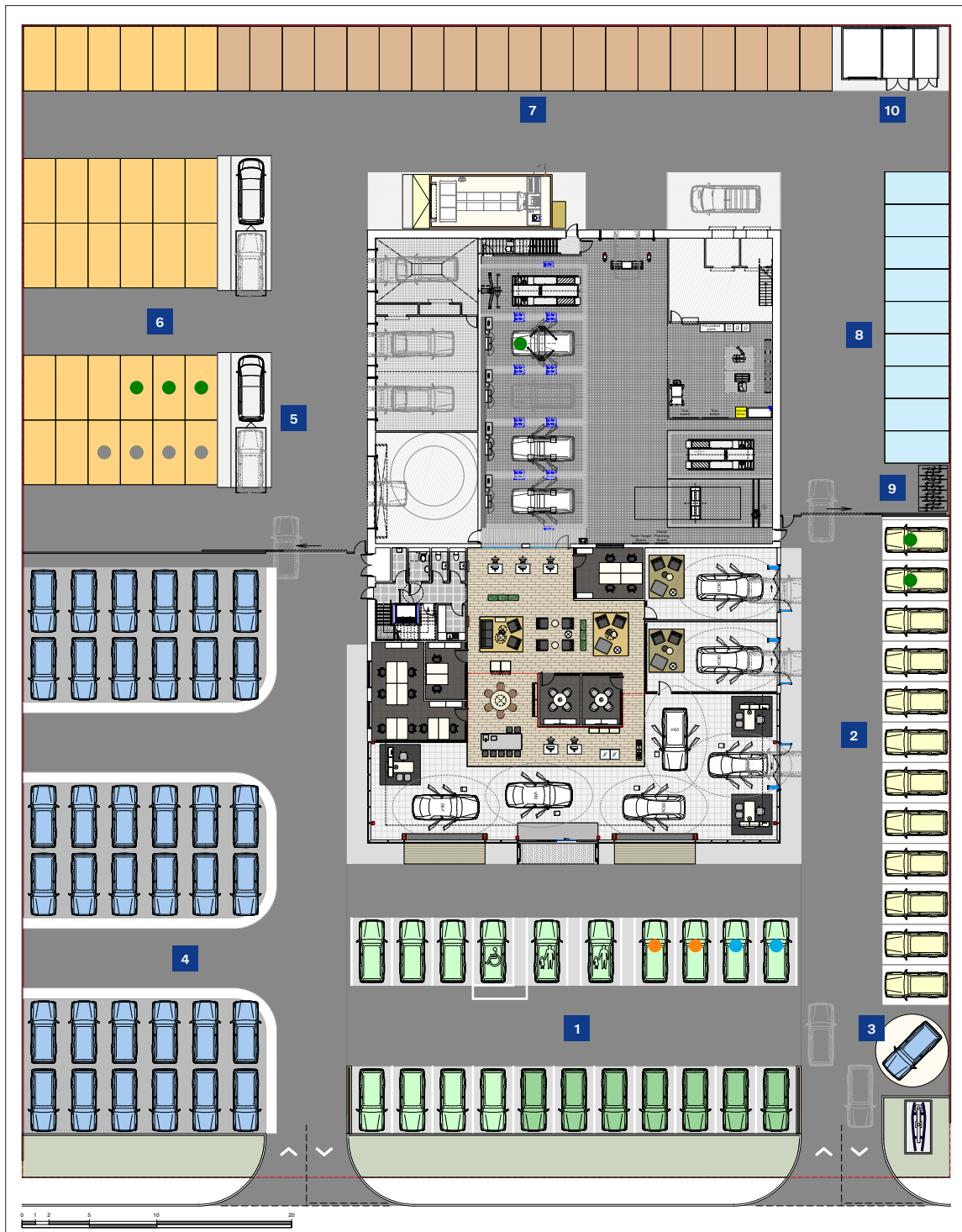


4.1 Introduction

Do not scale from these drawings

4.1.6 VRSE Planning Principles - site plan

Generic layout



VRSE areas

Notes to the plan

This schematic site plan illustrates the situation for a generic 'Generic Layout'.

Key:

1. Customer parking / Plaza
2. Demonstrator display
3. Selekt hero display
4. Selekt used vehicle display
5. Care By Volvo delivery bay

6. Service WIP parking
7. New vehicle storage
8. Staff parking
9. Bicycle racks
10. Waste storage

Charging points key:

- 11kW
- 22kW
- 13 Amp
- 175kW DC Fast Charger

NB: Designated charging bays as per VCUK VRSE Specification.

It is the responsibility of the Retailer to ensure that the number of charging points and total kW / Amps meet VCUK mandated standards.

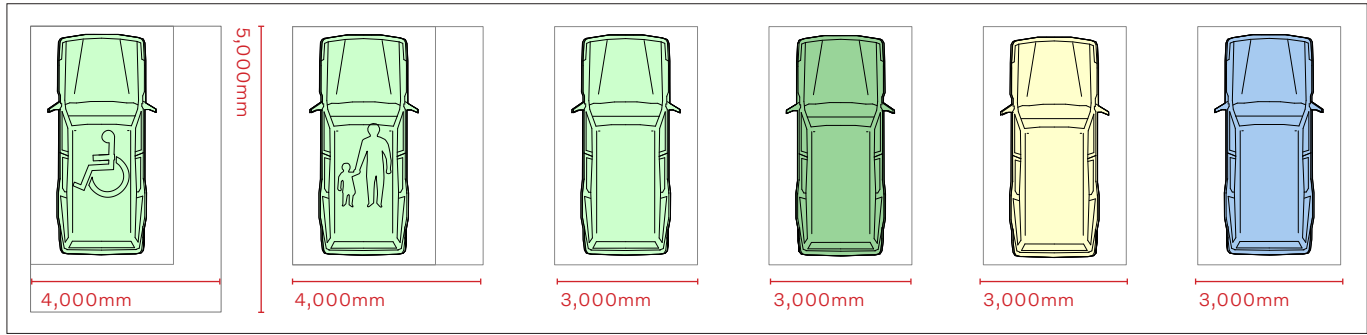


4.1 Introduction

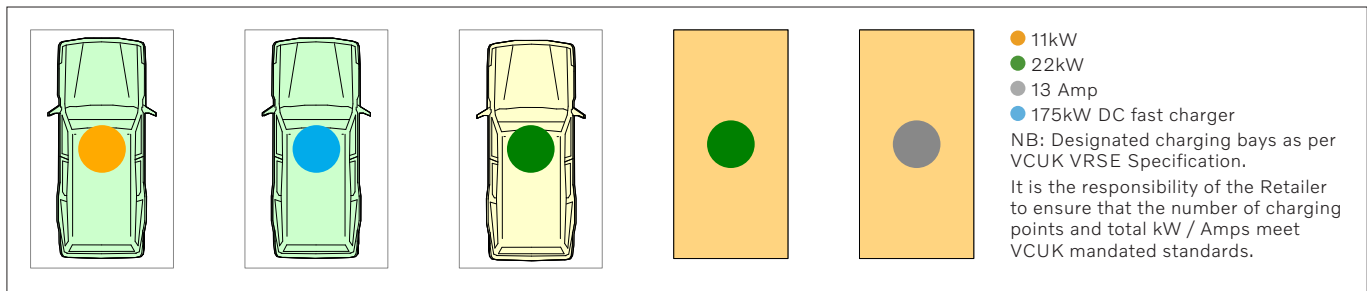
Do not scale from these drawings

4.1.7 VRSE Planning Principles - parking bay types

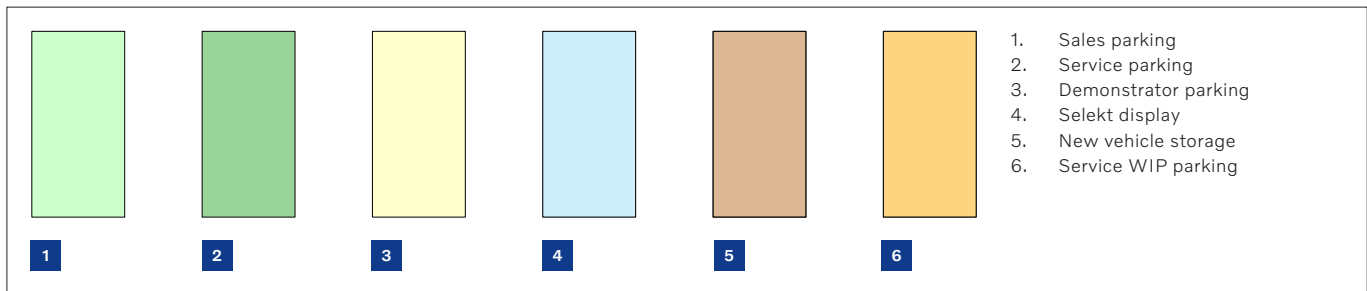
Customer parking indicative setting out (relevant to the generic layout site plan)



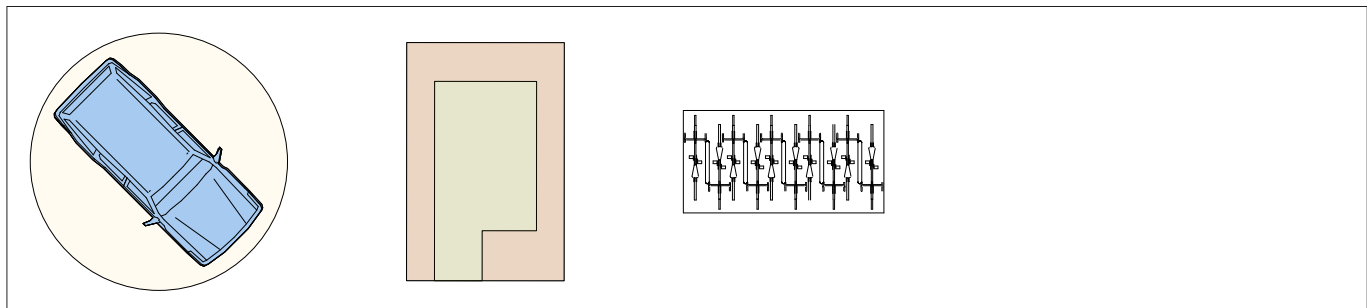
Charging bay types



Storage bay types



Display plinth, landscaping and bicycle parking





4.1 Introduction

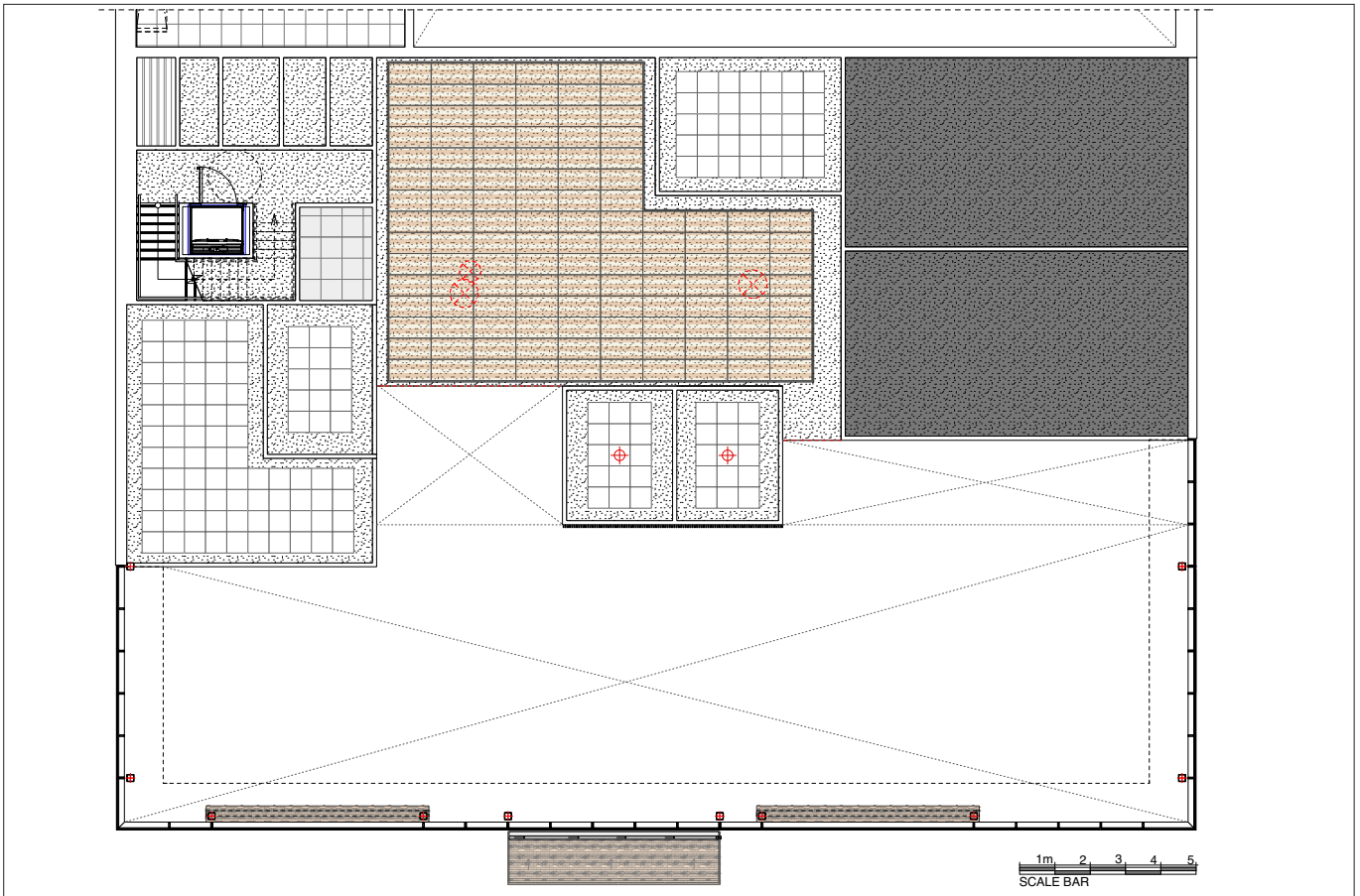
Do not scale from these drawings

4.1.8 VRSE Planning Principles - ground floor layout



Above: Floor plan

Below: Reflected ceiling plan

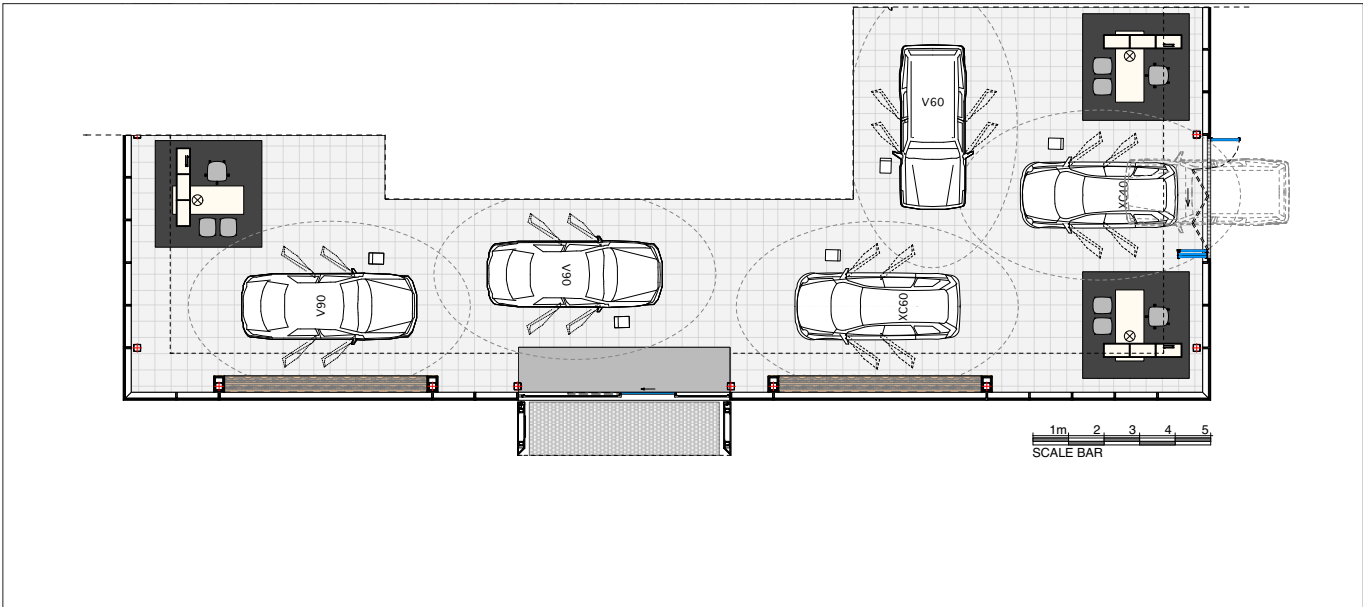




4.1 Introduction

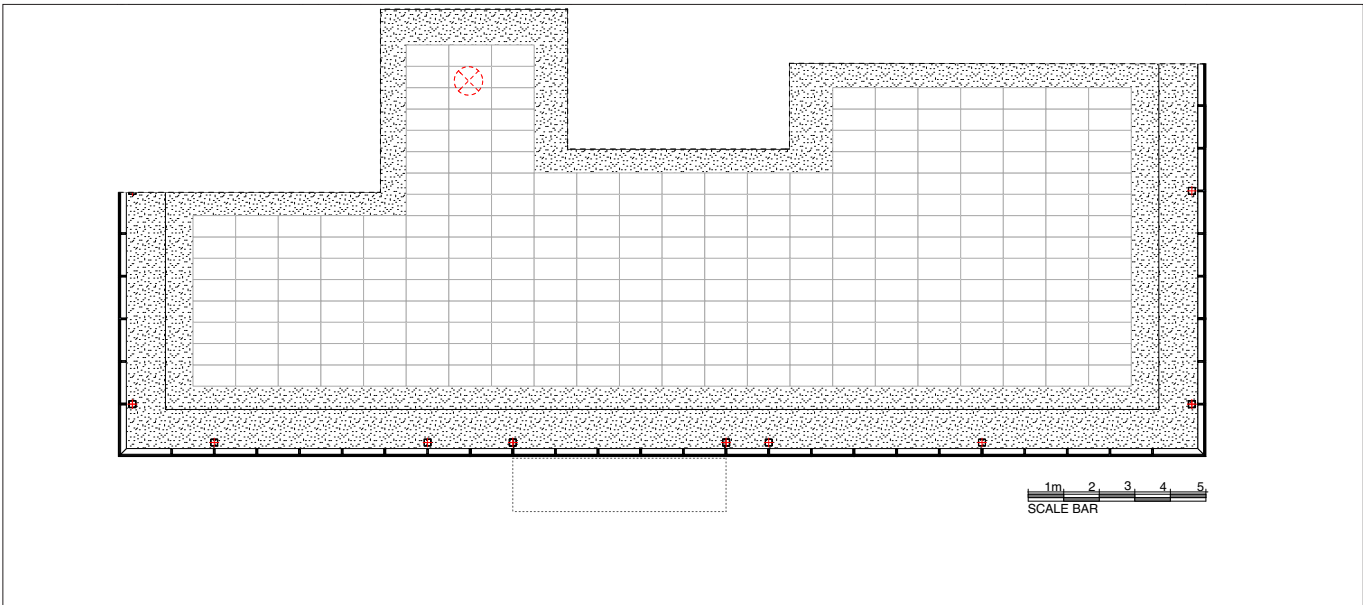
Do not scale from these drawings

4.1.9 VRSE Planning Principles - The Street layout



Above: Floor plan

Below: Reflected ceiling plan

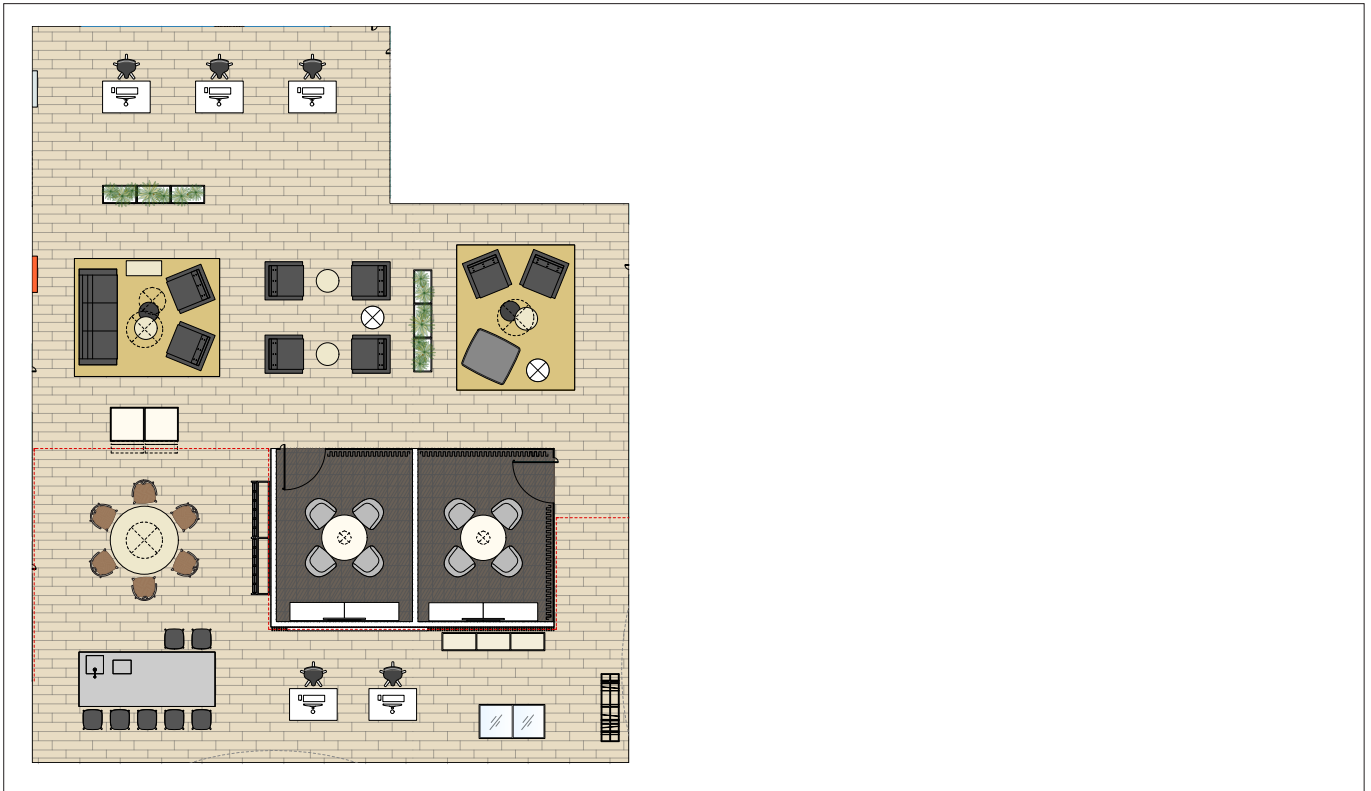




4.1 Introduction

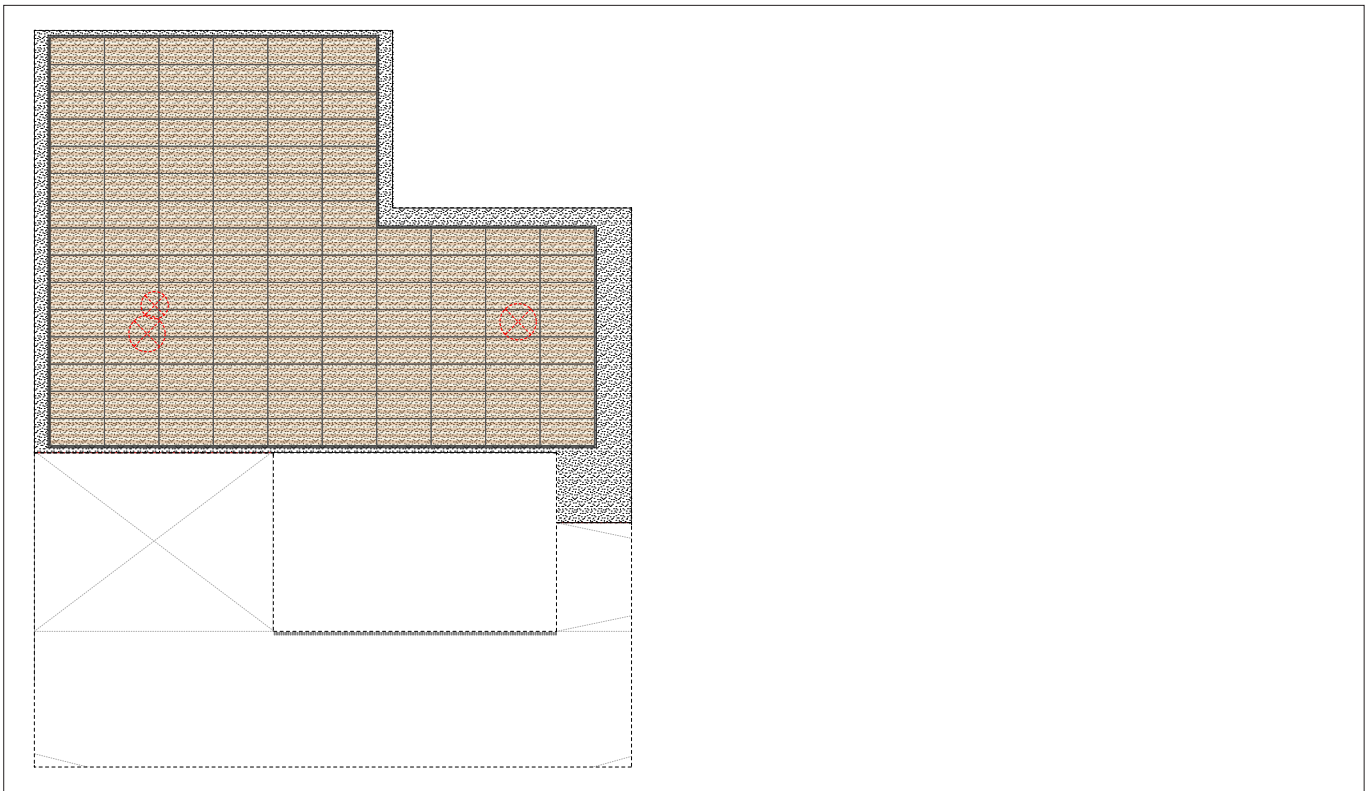
Do not scale from these drawings

4.1.10 VRSE Planning Principles - The Living Room layout



Above: Floor plan

Below: Reflected ceiling plan

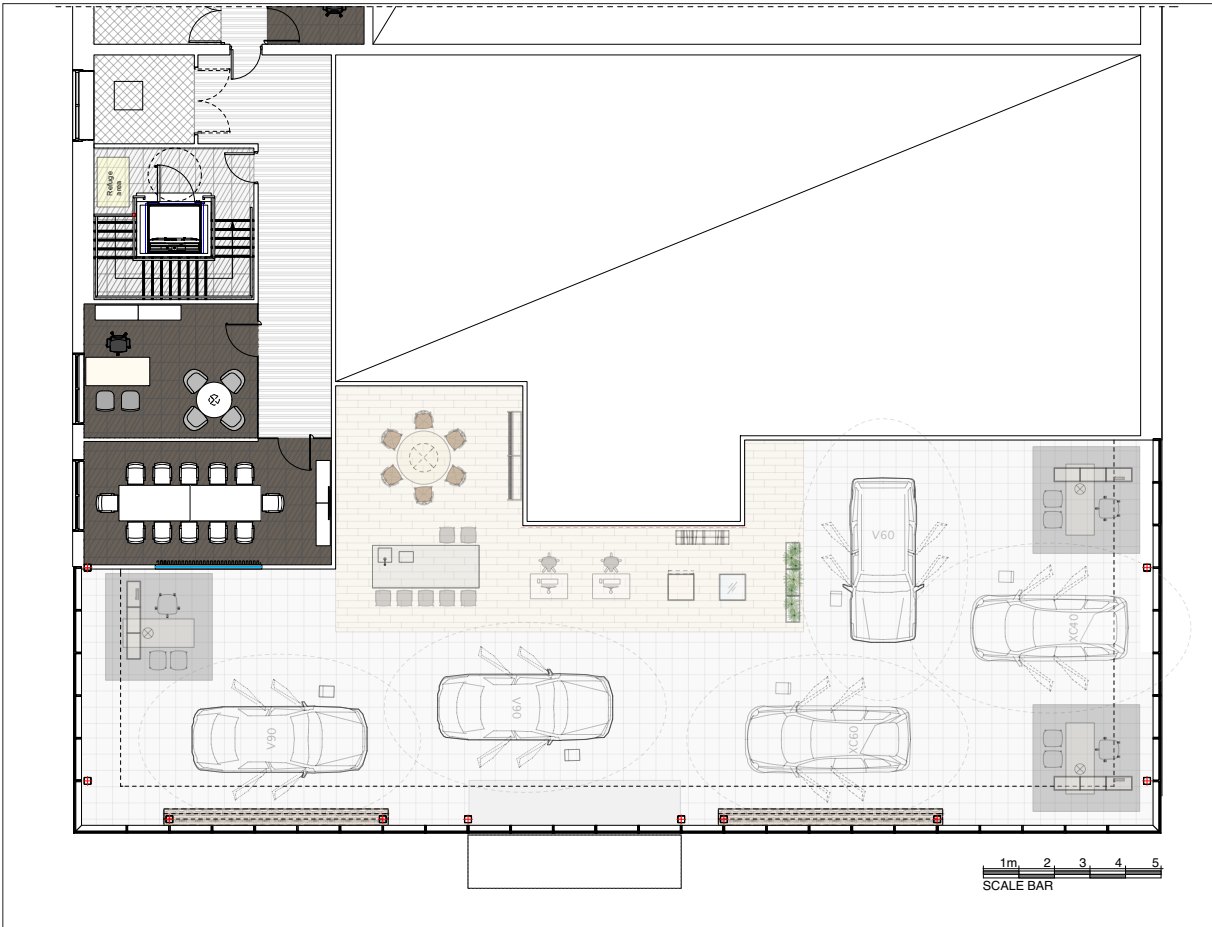




4.1 Introduction

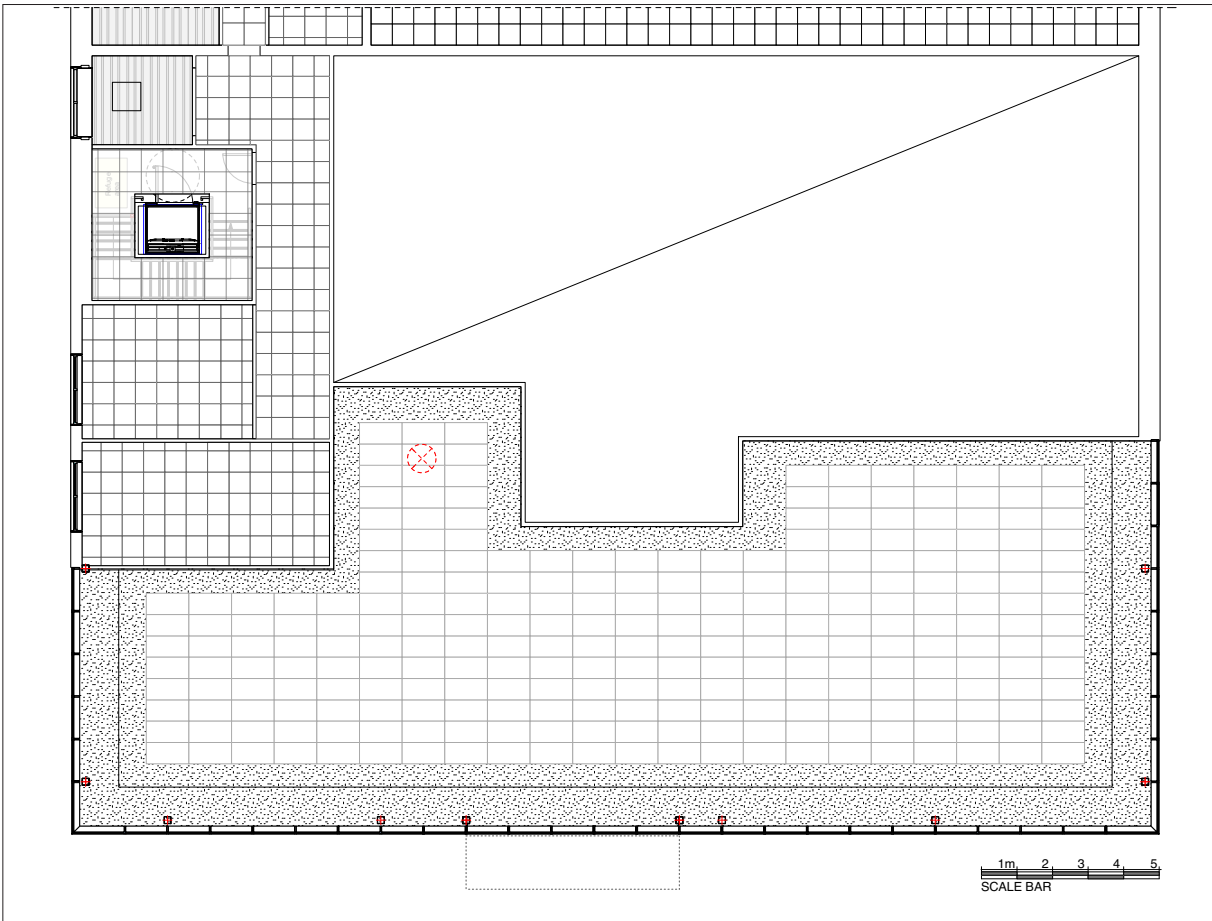
Do not scale from these drawings

4.1.11 VRSE Planning Principles - first floor layout



Above: Floor plan

Below: Reflected ceiling plan





Section 4.2

Generic planning and finishes



Datasheet 4.2 Finishes

Do not scale from these drawings

4.2.1 - Sales external finishes



Volvo Sales: External finishes

Greenfield:

External envelope

The typical façade will comprise of 1,200mm wide module.

Sales area

Proprietary 'Technal MX Capped' or similar thermally insulated curtain wall system.

Shop Window

Proprietary frameless, jointless, double glazed 12mm leaf clear glazed (to nearest, full 1,200mm wide module of glazing over). Size 6,000 x 2,400mm high overall, or single-glazed, solid, jointless panes are acceptable if SBEM can accommodate heat losses.

Showroom Entrance Portal

Proprietary ACM laminate wood effect cladding with concealed integral flat roof and rain water drainage, recessed track lighting – supplied and installed by Volvo specialist and an Opening Hours sign in acrylic plaque to internal side wall (by Merson).

NB: Contractor to include external scraper matt 'Emco Diplomat Model 510G' (FD2) aluminium frame with black rubber insert to external extent of entrance in recessed concrete plinth.

Mat-well edging in proprietary 'EMCO 500-13AL' recessed frame set in concrete.

Brownfield:

Existing curtain walling to be reviewed for suitability / sufficient height and may be incorporated into the GDP along with stub parapet alteration as required.

These areas to be white rendered with proprietary 'Sto-rend' or 'Parex' acrylic render (or equivalent product) as above described finished in through-colour acrylic, RAL 9003 Signal or Brilliant White or equivalent supplier reference.

See GDP elevations for approved extent.

Existing glazing which may be retained subject to meeting regulations.

All existing frames to be spray painted in-situ to achieve RAL 9006 Silver externally and RAL 9003 Signal or Brilliant White internally or equivalent PPC reference.

Internal mullions and transoms etc. all finished RAL 9003 Signal or Brilliant White.



Datasheet 4.2 Finishes

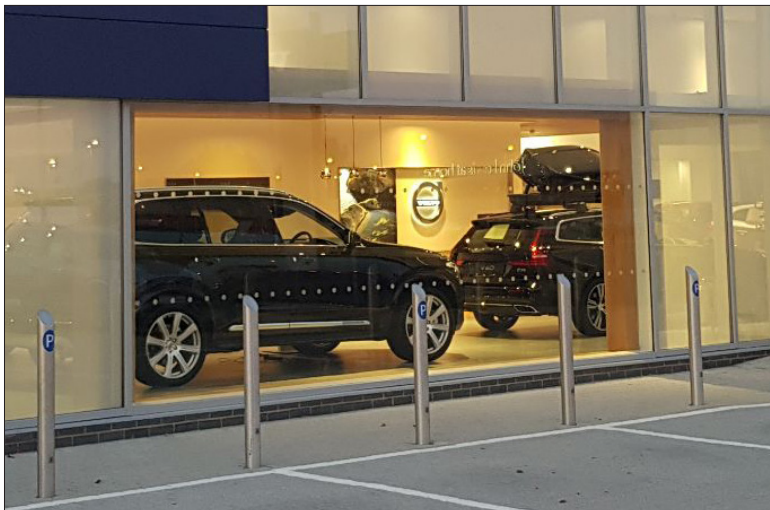
Do not scale from these drawings

4.2.1 - Sales external finishes

Glazing



Shop Windows



Showroom Entrance





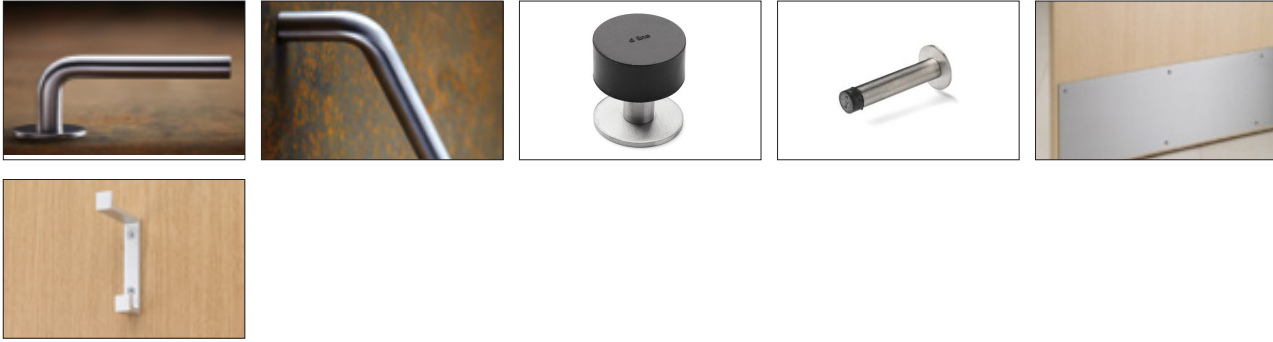
Datasheet 4.2 Finishes

Do not scale from these drawings

4.2.2 - A. Internal finishes

NB: Please refer to the Outline Specifications for full details

Ironmongery



Ironmongery

Proprietary 'Eisenware D Line' satin stainless steel handles and ironmongery (DA1 – DA3).

Glazing



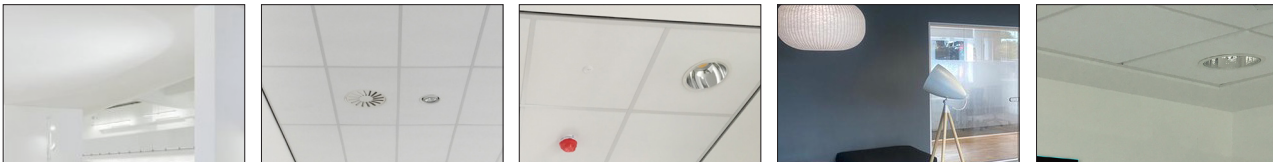
V1 – Consultation rooms and Sales Offices
Proprietary 'Komfort Polar' or 'PolarTec' Frameless Optical white low iron glazed screen and glass door with ironmongery as required.

V2 – Non-customer facing offices
Proprietary 'Komfort Polar' or 'PolarTec' with RAL 9003 Signal or Brilliant White finished glazed door panel with rebated frame.

GP1– Internal glazed screens
Proprietary 'Komfort PolarTec' or 'Polar Vision' frameless, highly transparent glass, fixed vertically. Frameless double-glazed unit. Typically fire-rated glazing between Sales and After-sales.

GP2 – Screen walls at Car Delivery
Proprietary 'Komfort PolarTec' or 'Polar Vision' frameless, highly transparent extra clear low iron glazed screen system, fixed vertically. All glazing to include manifestation.

Ceiling finishes



CS1 - The Street friezes and bulkheads
'Gyproc Duraline MR or Duraline' painted MF gypsum ceiling. Matt finish to RAL 9003 Signal or Brilliant White.

CS3 - The Street suspended ceiling tiles
The Street - Armstrong Ultima + OP7666M tegular ceiling system formed from 600 x 1,200mm tiles. Standard white, matt finish, grid in white PPC 25mm tee.

CS3 - The Street Option
Armstrong Ultima + BP7680M4' 600 x 1200mm tegular tile. Standard white, matt finish, grid in white PPC 15mm tee.

CS4 - Car Handover Suite Bay
'Gyproc Duraline MR or Duraline' painted MF gypsum ceiling. Satin finish to RAL 7037 Dark Grey.

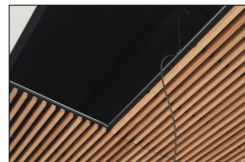
CS4 - Consultation, offices and meeting rooms
'Armstrong Ultima +7674M Microlook 90', 600 x 600mm tegular tile.
Colour: Matt finished white to RAL 9003 Signal or Brilliant White. Ceiling grid in white PPC 15mm micro tee.



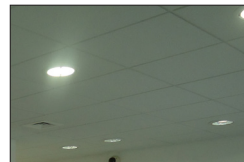
CS6 - The Living Room areas - Proprietary 600 x 1,200mm lay in timber ceiling supplied by Exhibition & Interiors in real wood 'Ash' ribs at 20mm thick x 45mm deep and 30mm spacing gap.

Timber batten edges to be concealed within bulkheads. Battens to be cut out and pattressed for recessed light fittings.

Timber ceilings to have appropriate fire resistance certification.



P3 Living area soffit behind open ceilings.
Ceiling (and all services / ducts) decorated in matt black emulsion paint.
or
Black fabric mesh stapled to the back of the battens.



CT1 - Suspended Ceiling Tiles
Stores, Canteens and Tech facilities including Staff and Tech Toilets - 'Armstrong Dune' 600 x 600mm moisture resistant lay in grid system. Standard white.



Datasheet 4.2 Finishes

Do not scale from these drawings

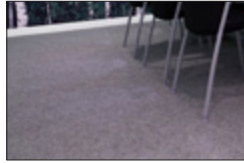
4.2.3 - B. Internal finishes

NB: Please refer to the Outline Specifications for full details

Floor finishes



FD1 - Internal entrance mat 'Kåbe Mattan Mat Original' Or 'Emco Diplomat Ribbed carpet 510R, Anthracite No. 200' aluminium framed internal matt with black textile brush strips and anodized aluminium recessed edge strip.



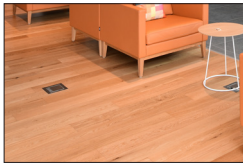
FT1 - Offices and meeting rooms
5mm 'Interface Unity' 500 x 500mm carpet tile Monolithic or Ashlar laid - Colour 'Husk'.



FC1 - The Street
'Minoli C Stone 750R' 750 x 750 x 10mm tile, Grey grout.



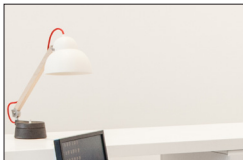
FC2 - Ceramic tile
Circulation, customer toilets and Lobby, GF Kitchenette - 'Minoli C Stone 600R' 600 x 600 x 10mm tile, Grey grout.



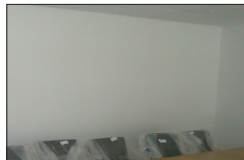
FW1 - The Living Room
Oak wood effect porcelain plank 'Minoli ETV' 9mm tile 222 x 895mm plank, rectified porcelain stoneware with sand or grey grout
Timber effect floors to be laid linear along the longest length on showroom axis perpendicular to customer entrance doors and fully bonded to substrate.

Plank set out to minimise cuts at expansion joints - joints preferably between The Street and Living area floor tile interface.
Planks laid 1/3rd bond.

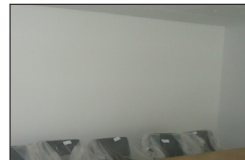
Wall finishes



Generally
Walls generally decorated in emulsion paint. RAL 9003 Signal or Brilliant White.



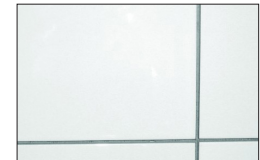
P1 - Paint to walls
Plasterboard walls and exposed steels decorated in emulsion paint matt finish. RAL 9003 Signal or Brilliant White.



P1A - Paint to walls
In Consultation Room only, RAL 9001 Cream.



P2 - Paint to joinery
Painted joinery decorated in gloss paint finish. RAL 9003 Signal or Brilliant White.

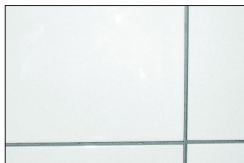


WT1 - Wall tiling
Customer WC areas - 'Minoli City - City Bianco' 100 x 300 x 6mm white unbleached wall tile, matt, White grout.

Skirting finishes



WT2 - Wall tiling
Customer WC areas - 'Minoli City - City Cemento' 100 x 300 x 6mm warm grey wall tile, matt, Grey grout.



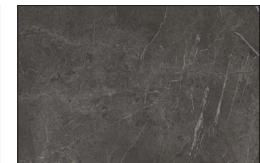
M1 - Wall tiling
Aftersales and Staff Areas. e.g Canteen, Kitchen - 'Minoli Neve' 200 x 200mm white wall tile, matt, White grout.



VS1 - Skirting timber
Sales areas including offices - 56mm Timber (or MDF) skirting lacquer or semi gloss painted. RAL 9003 Signal or Brilliant White.



VS1A - Skirting timber
In Consultation Room only, finished to RAL 9001 Cream.



VS1B - Toilet skirting
100 x 600mm cut 'Minoli C-Stone' tiles, Grey grout.



Section 4.3

External details



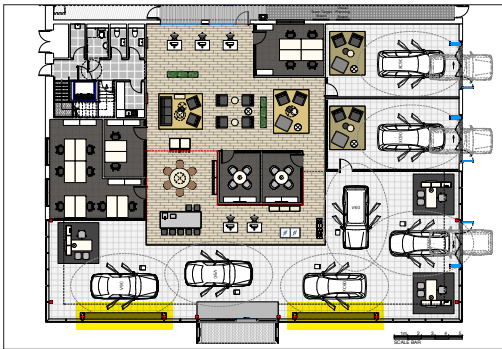
Datasheet 4.3 External details

Do not scale from these drawings

4.3.1 Shop Windows



Location Drawing extract from leneric layout plan



Detailed area

Finishes

Proprietary frameless, jointless, double glazed
 12mm leaf clear glazed, toughened, low E, low
 iron, Argon filled cavity glazing in single pane (to
 nearest, full 1,200mm wide module of glazing
 over).

Size 6,000 x 2,400mm high overall.

Pre-contract H&S plan to inform contractors of
 weight and lifting conditions

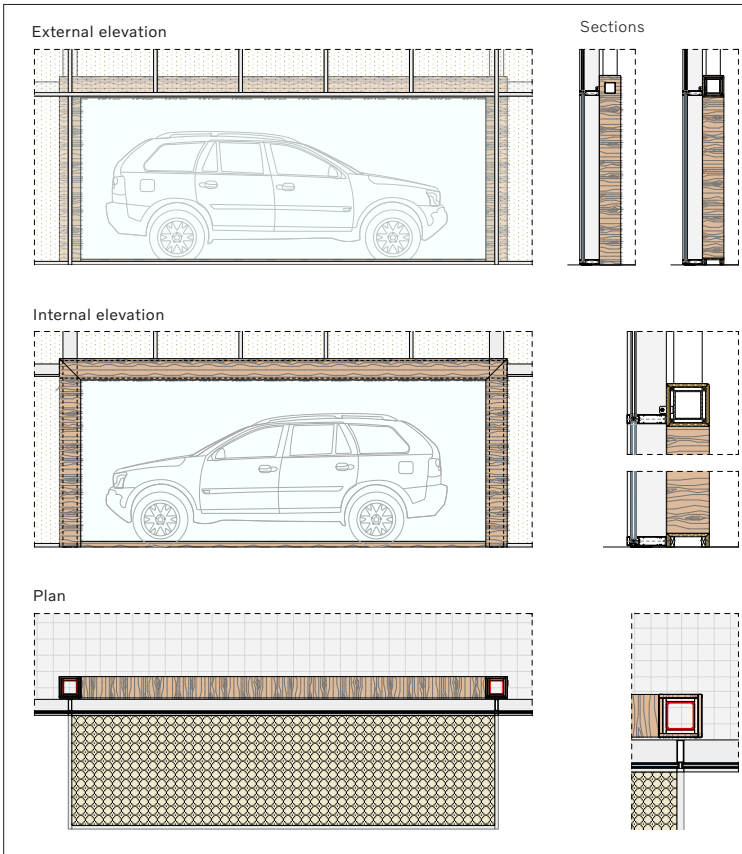
or

single-glazed, solid, jointless panes are acceptable
 if SBEM can accommodate heat losses.

Finishes and equipment

For full details, see 4.2.2.1 - Sales external finishes and
 also 4.2.2.2 / 4.2.2.3 - A / B Internal finishes.

Shop Window details



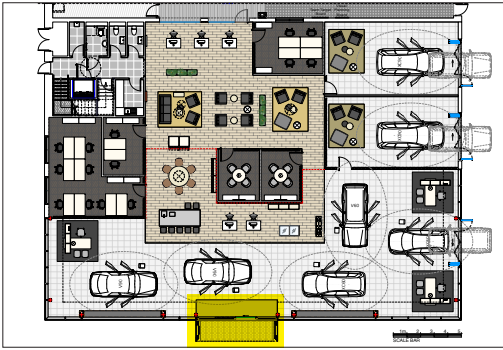


Datasheet 4.3 External details

Do not scale from these drawings

4.3.2 Customer Entrance

Location drawing extract from generic layout plan



Detailed area

Finishes

Proprietary ACM laminate wood effect cladding with concealed integral flat roof and rain water drainage, recessed track lighting – supplied and installed by Volvo specialist and an Opening Hours sign in acrylic plaque to internal side wall (by Mersons).

NB: Contractor to include external scraper matt 'Emco Diplomat Model 510G' (FD2) aluminium frame with black rubber insert to external extent of entrance in recessed concrete plinth.

Mat-well edging in proprietary 'EMCO 500-13AL' recessed frame set in concrete.

Finishes and equipment

For full details, see 4.2.2.1 - Sales external finishes and also 4.2.2.2 / 4.2.2.3 - A / B Internal finishes.

Customer Entrance details





Section 4.4

Internal Sales details

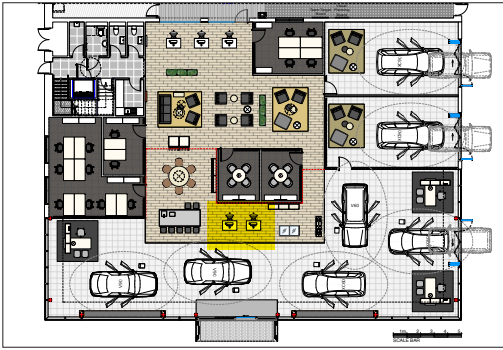


Datasheet 4.4 Internal Sales details

Do not scale from these drawings

4.4.1 Host Reception

Location Drawing extract from Generic Layout Plan



Detailed area

Equipment

All furniture items and fittings are supplied by either E&I or Senab.

NB: Some construction elements are required in addition to the furniture items.

Please ensure adequate provision is made for power and data requirements in this area.

Finishes

FW1 - Wood effect porcelain plank 'Minoli ETV' 9mm tile 222 x 895mm plank, rectified porcelain stoneware with sand or grey grout.

P1 - Plasterboard walls decorated in emulsion paint matt finish RAL 9003 Signal or Brilliant White - except Consultation Room, finished to RAL 9001 Cream.

P2 - Painted joinery decorated in gloss paint semi matt finish RAL 9003 Signal or Brilliant White.

VS1 - Skirtings – 56mm timber (or MDF) skirting lacquer or semi gloss painted RAL 9003 Signal or Brilliant White - except Consultation Room, finished to RAL 9001 Cream.

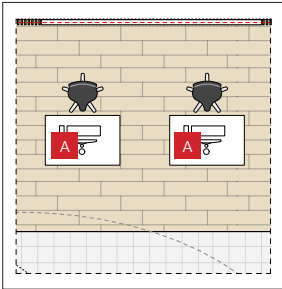
Ceilings typically 2,800 – 3,000mm above FFL.
CS6 - Proprietary 600 x 1,200mm lay in timber ceiling supplied by Exhibition & Interiors in real wood 'Ash' ribs at 20mm thick x 45mm deep and 30mm spacing gap.

P3 - Living area soffit behind open ceilings – Ceiling (and all services / ducts) decorated in emulsion paint matt black.

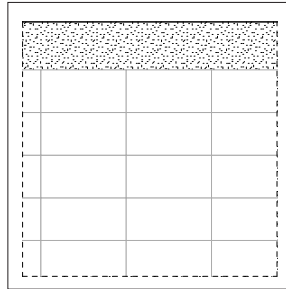
Timber ceilings to be laid linear with timber plank floor below.

Dropped bulkhead with MF small-tolerance margins can be used to achieve a layout to a full tile.

Host Reception plan

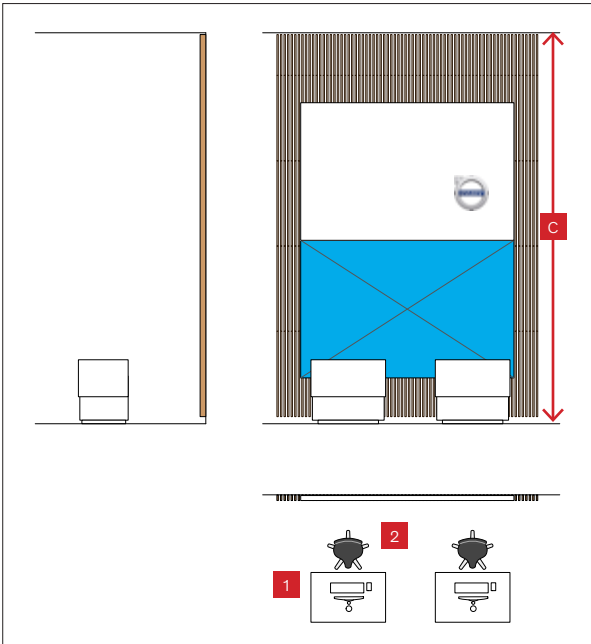


Reflected ceiling plan



Floor box location

Elevations



Comprises:

1. Reception counter small
2. Work chair high

Ideal ceiling height

NB: Wherever possible, Host Reception ceilings should be 'full height' (i.e. between 4,800 and 5,000mm), unless they are positioned in building with lower rooflines, where the minimum height is 2,800mm.



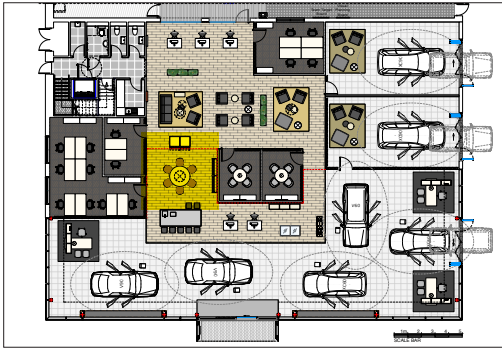
Datasheet 4.4 Internal Sales details

Do not scale from these drawings



4.4.2 The Scandinavian Group

Location Drawing extract from Generic Layout Plan



Detailed area

Equipment

All furniture items and fittings are supplied by Senab (<https://VRSE.senab.com>)
Please ensure adequate provision is made for power and data requirements in this area.

Finishes

FC1 - 'Minoli C Stone 750R' 750 x 750 10mm tile, grey grout.

Ceilings typically 4,500mm above FFL.
(Brownfield to be maximum achievable as GDP. Mezzanine floor with viewing will dictate higher The Street ceiling).

CS1 - The Street, Friezes, perimeter margin, bulkheads - 'Gyproc Duraline MR or Duraline' Painted MF gypsum ceiling, RAL 9003 Signal or Brilliant White, matt finish.

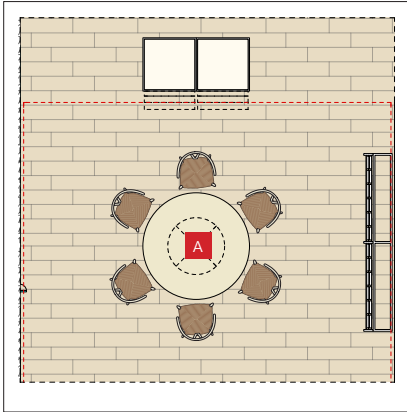
CS3 - The Street 'Armstrong Ultima + BP7680M4' 1,200 x 600mm tegular tile. Standard white, matt finish. Ceiling grid in white PPC 25mm tee.

P1 - Plasterboard walls - decorated in emulsion paint matt finish RAL 9003 Signal or Brilliant White.

P2 - Painted joinery - decorated in gloss paint semi matt finish RAL 9003 Signal or Brilliant White.

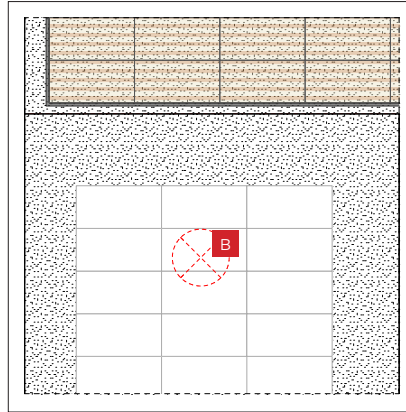
VS1 - Skirtings - 56mm timber (or MDF) skirting lacquer or semi gloss painted RAL 9003 Signal or Brilliant White to offices.

Your Car Studio plan



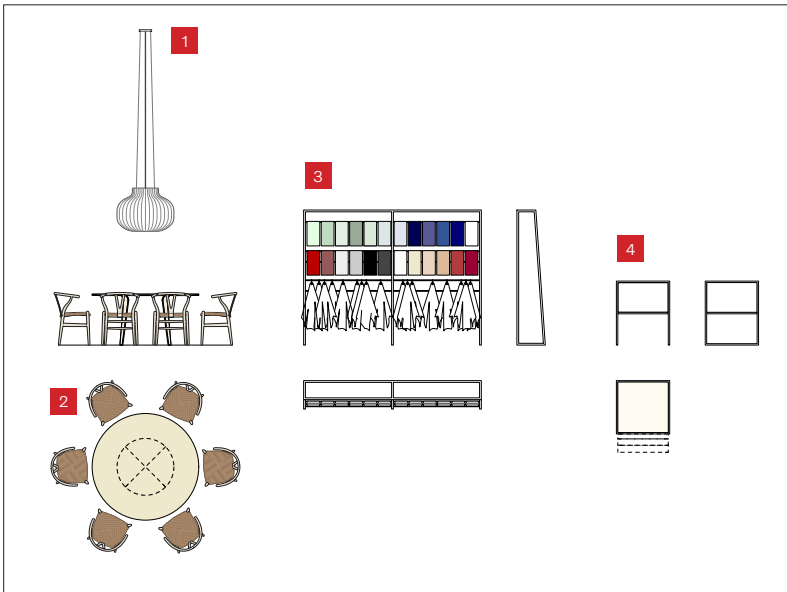
Floor box location

Reflected ceiling plan



Pendant light

Your Car Studio components - plan and elevations



Comprises:

1. Pendant light
2. Scandinavian Group
3. Colour and Trims display
4. Display Unit Medium Full Glass

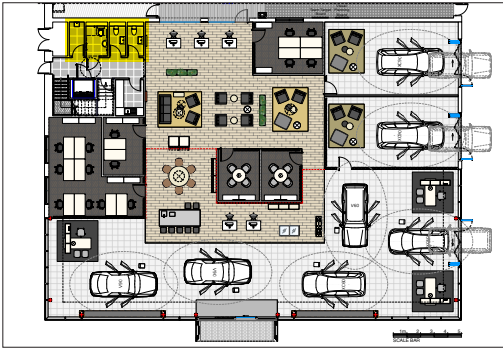


Datasheet 4.4 Internal Sales details

Do not scale from these drawings

4.4.3 Customer toilets

Location drawing extract from generic layout plan



Detailed area

Equipment

All furniture items and fittings are supplied by Senab.

Please ensure adequate provision is made for power and data requirements in this area.

Finishes

Internal doors - timber solid core door in aluminium frame with concealed hinges and ironmongery as required. Door in HW exposed lip and laminate white semi-matt finished to RAL 9003 Signal or Brilliant White.

Frame colour - PPC or white semi-matt finished to RAL 9003 Signal or Brilliant White or equivalent PPC reference.

NB: if regulations require colour contrast, frames can be off-white pending Brand Guardian approval.

WT1 - Customer toilets - 'Minoli City - City Bianco' 100 x 300 x 6mm white unbleached wall tile, matt. White grout

WT2 - Customer toilets - 'Minoli City - City Cemento' 100 x 300 x 6mm warm grey wall tile,

matt. Grey grout.

Customer toilet walls to have concealed cisterns.

Toilet walls made up of 2 walls in (WT1) 'Minoli Bianco' and the other 2 adjacent walls containing sanware or fittings, to be (WT2) 'Minoli Cemento' Warm Grey or

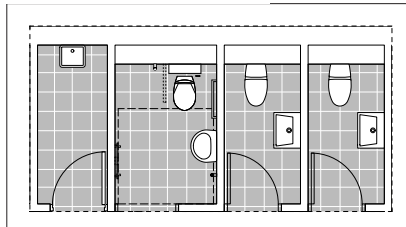
Rear wall concealing the cistern can be substituted with a matching IPS panel, colour 'Abet 870' Grey.

Toilet skirting comprises 100 x 60mm cut 'Minoli C-Stone' floor tile, Grey grouted. Wall thicknesses to permit all pipework to be concealed within walls or IPS panels.

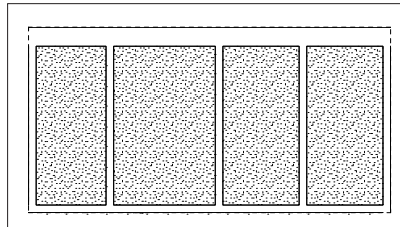
Circulation, customer toilets and Lobby, GF kitchenette - 'Minoli C Stone 600R' 600 x 600 x 10mm tile, Grey grout.

CS1 - The Street, Friezes, perimeter margin, bulkheads - 'Gyproc Duraline MR or Duraline', painted MF gypsum ceiling, RAL 9003 Signal or Brilliant White, matt finish.

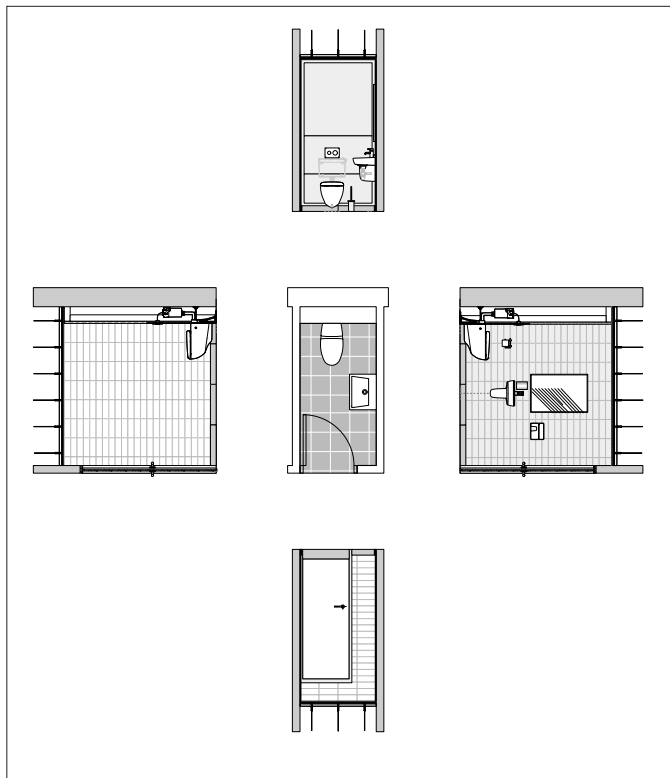
Customer facilities - plan



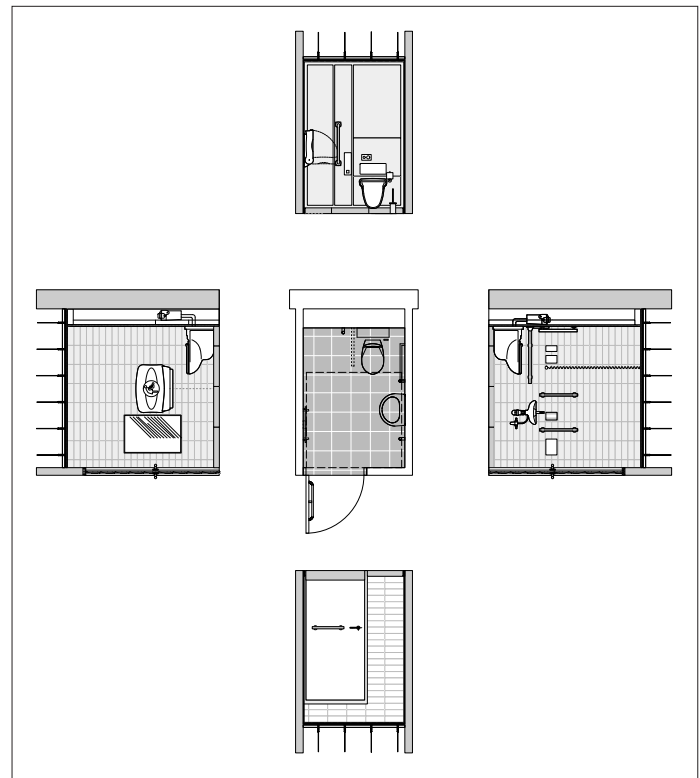
Reflected ceiling plan



Typical wall elevations - male / female facilities



Typical wall elevations - Accessible facilities





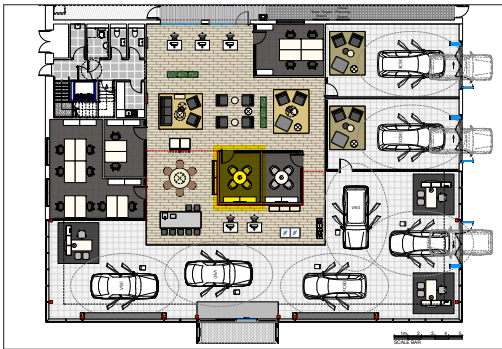
Datasheet 4.4 Internal Sales details

Do not scale from these drawings



4.4.4 Consultation Rooms

Location drawing extract from generic layout plan



Detailed area

Equipment

All furniture items and fittings are supplied by Senab.

Please ensure adequate provision is made for power and data requirements in this area.

Finishes

FT1 - Offices and meeting rooms - 5mm 'Interface Unity' 500 x 500mm carpet tile Monolithic or Ashlar laid - Colour 'Husk'.

CS4 - Suspended ceiling tiles - 'Armstrong Ultima + 7674M Microlook 90' 600 x 600mm or similar approved, lay in grid installation. Colour; White, exposed grid finished white (for new developments).

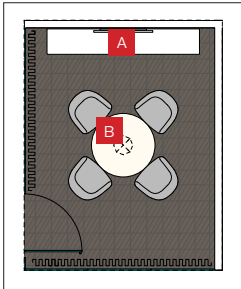
P1 - Plasterboard walls - Decorated in emulsion paint matt finish RAL 9001 Cream.

P2 - Painted joinery - Decorated in gloss paint semi matt finish RAL 9001 Cream.

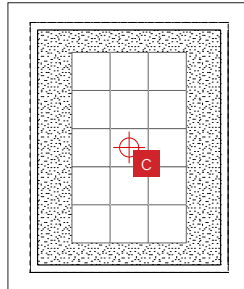
Option V1 - Consultation offices and Sales rooms. Proprietary 'Komfort Polar or PolarTec' Frameless Optical White low iron glazed screen and glass door with ironmongery as required.

CS1 - The Street, Friezes, perimeter margin, bulkheads - 'Gyproc Duraline MR or Duraline' painted MF gypsum ceiling, RAL 9003 Signal or Brilliant White, matt finish.

Consultation Rooms plan



Reflected ceiling plan



- A Wall box location
- B Floor box location
- C Pendant light

Elevations



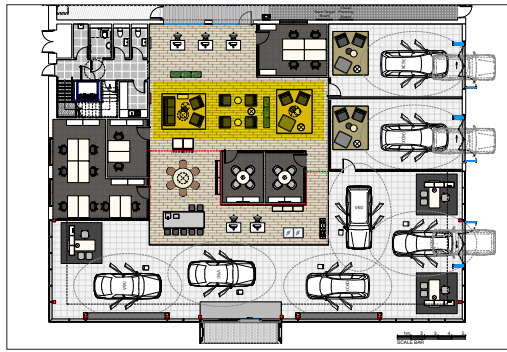


Datasheet 4.4 Internal Sales details

Do not scale from these drawings

4.4.5 The Living Room

Location drawing extract from generic layout plan



Detailed area

Equipment

All furniture items and fittings are supplied by Senab.

Please ensure adequate provision is made for power and data requirements in this area.

Finishes

FW1 - Wood effect porcelain plank 'Minoli ETV' 9mm tile 222 x 895mm plank, rectified porcelain stoneware with sand or grey grout.

P1 - Plasterboard walls decorated in emulsion paint matt finish RAL 9003 Signal or Brilliant White.

P2 - Painted joinery decorated in gloss paint semi matt finish RAL 9003 Signal or Brilliant White.

VS1 - Skirtings - 56mm timber (or MDF) skirting lacquer or semi gloss painted RAL 9003 Signal or Brilliant White.

Ceilings typically 2,800 - 3,000mm above FFL.

CS6 - Proprietary 600 x 1,200mm lay in timber

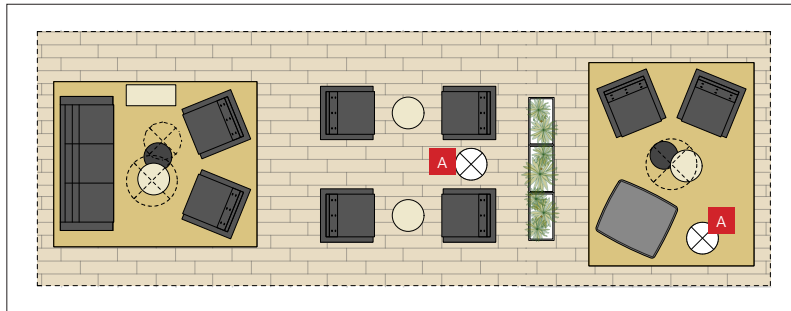
ceiling supplied by Exhibition & Interiors in real wood 'Ash' ribs at 20mm thick x 45mm deep and 30mm spacing gap.

P3 - Living area soffit behind open ceilings - Ceiling (and all services / ducts) decorated in emulsion paint matt black.

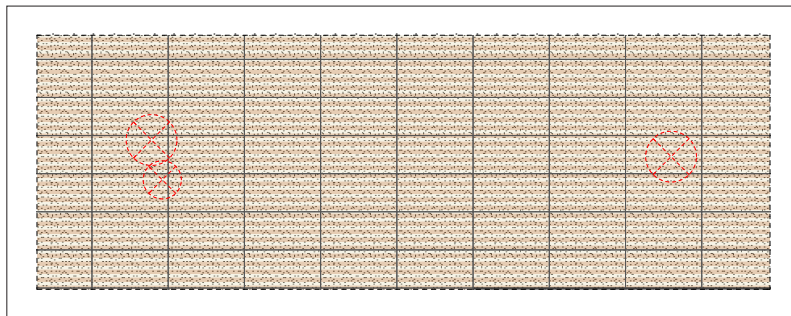
Timber ceilings to be laid linear with timber plank floor below.

The Living Room detailed plan

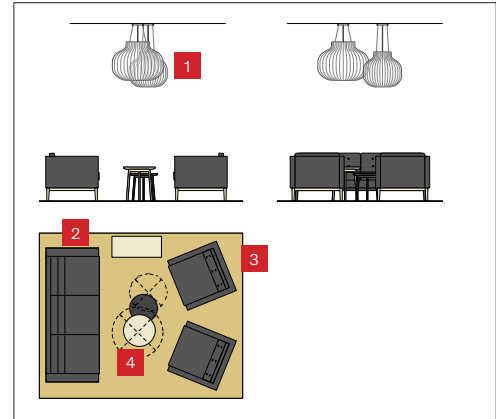
Floor box location



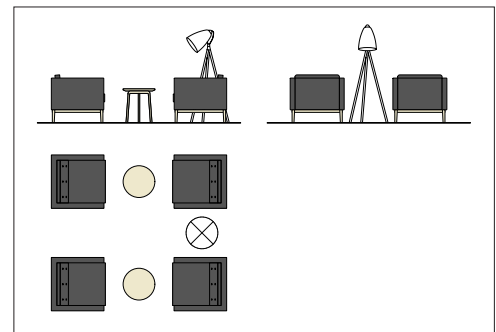
Reflected ceiling plan



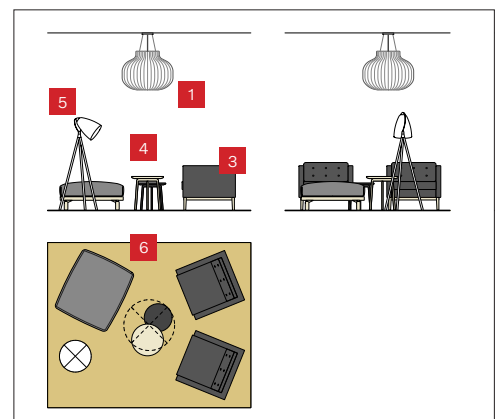
Lounge configuration 1



Lounge configuration 2



Lounge configuration 3



Key:

- 1. Lounge pendant
- 2. Leather sofa
- 3. Easy chair
- 4. Lounge tables
- 5. Lounge floor lamp
- 6. Ottoman

Planters





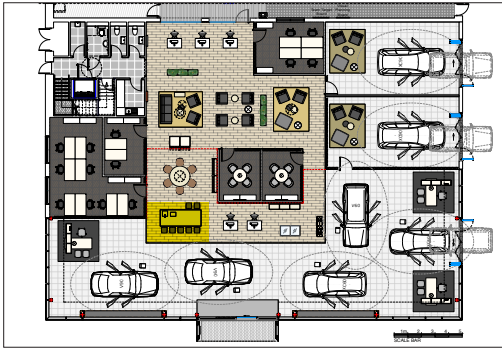
Datasheet 4.4 Internal Sales details

Do not scale from these drawings



4.4.6 Clean Water Station / Coffee Point

Location drawing extract from generic layout plan



Detailed area

Equipment

All furniture items and fittings are supplied by Senab.
Please ensure adequate provision is made for power and data requirements in this area.

Finishes

FW1 - Wood effect porcelain plank 'Minoli ETV'
9mm tile 222 x 895mm plank, rectified porcelain stoneware with sand or grey grout.

P1 - Plasterboard walls decorated in emulsion paint matt finish RAL 9003 Signal or Brilliant White.

P2 - Painted joinery decorated in gloss paint semi matt finish RAL 9003 Signal or Brilliant White.
VS1 - Skirtings - 56mm timber (or MDF) skirting lacquer or semi gloss painted RAL 9003 Signal or Brilliant White.

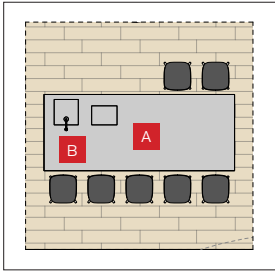
Ceilings typically 2,800 - 3,000mm above FFL.
CS6 - Proprietary 600 x 1,200mm lay in timber ceiling supplied by Exhibition & Interiors in real wood 'Ash' ribs at 20mm thick x 45mm deep

and 30mm spacing gap.

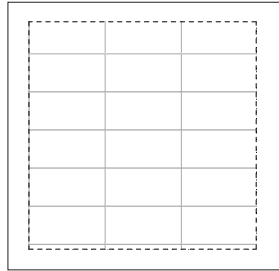
P3 - Living Room soffit behind open ceilings - Ceiling (and all services / ducts) decorated in emulsion paint matt black.

Timber ceilings to be laid linear with timber plank floor below.

Details plan

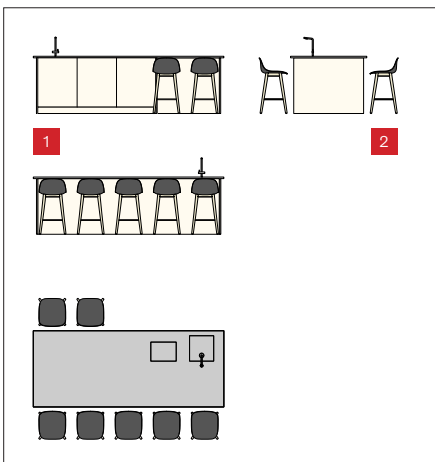


Reflected ceiling plan



A Floor box location B Water supply / drainage (optional)

Component elevations (by others, sizes may vary, according to site planning)



- 1. Water station and coffee point
- 2. Bar chair

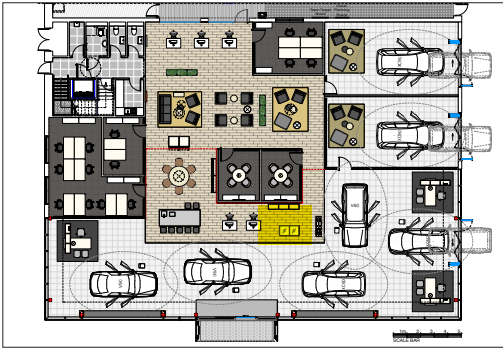


Datasheet 4.4 Internal Sales details

Do not scale from these drawings

4.4.7 Lifestyle Shop

Location drawing extract from generic layout plan



Detailed area

Equipment

All furniture items and fittings are supplied by Senab

Please ensure adequate provision is made for power and data requirements in this area.

Finishes

FW1 - Wood effect porcelain plank 'Minoli ETV' 9mm tile 222 x 895mm plank, rectified porcelain stoneware with sand or grey grout.

P1 - Plasterboard walls decorated in emulsion paint matt finish RAL 9003 Signal or Brilliant White.

P2 - Painted joinery decorated in gloss paint semi matt finish RAL 9003 Signal or Brilliant White.

VS1 - Skirtings - 56mm timber (or MDF) skirting lacquer or semi gloss painted RAL 9003 Signal or Brilliant White.

Ceilings typically 2,800 - 3,000mm above FFL.

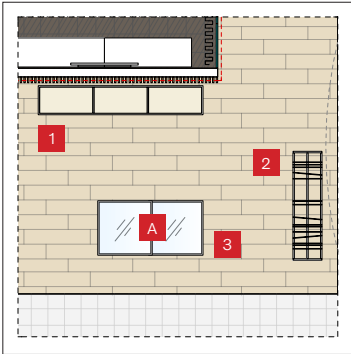
CS6 - Proprietary 600 x 1,200mm lay in timber ceiling supplied by Exhibition & Interiors in real wood 'Ash' ribs at 20mm thick x 45mm deep

and 30mm spacing gap.

P3 - Living area soffit behind open ceilings - Ceiling (and all services / ducts) decorated in emulsion paint matt black.

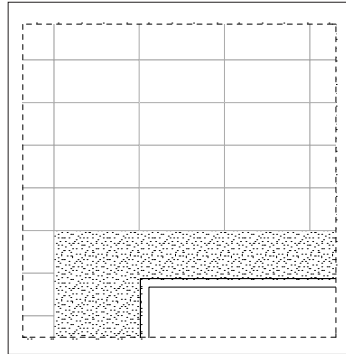
Timber ceilings to be laid linear with timber plank floor below.

Details plan

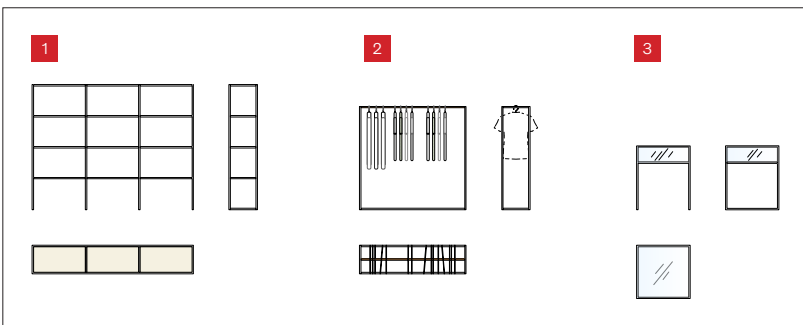


Floor box location

Reflected ceiling plan



Lifestyle Shop components plans and elevations



1. Colour and Trims Display

2. Clothes Hanger

3. Display Unit Medium Full Glass

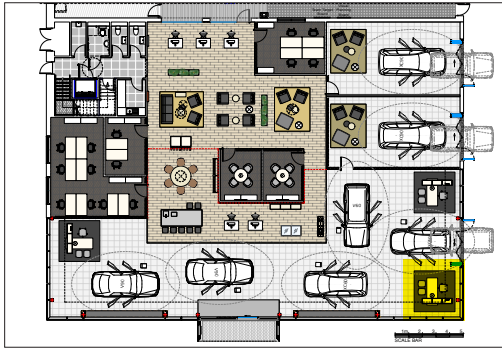



Datasheet 4.4 Internal Sales details

Do not scale from these drawings

4.4.8 Consultation Points

Location drawing extract from generic layout plan



 Detailed area

Equipment

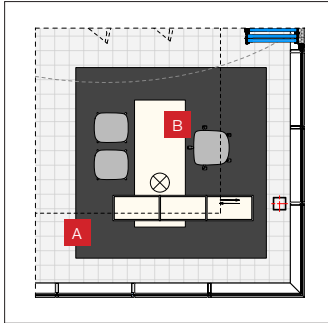
All furniture items and fittings are supplied by Senab.
Rug supplied by Exhibition & Interiors.
Please ensure adequate provision is made for power and data requirements in this area.

Finishes

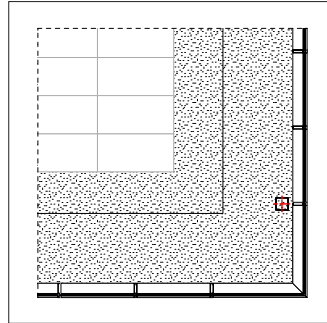
FC1 - 'Minoli C Stone 750R' 750 x 750 x 10mm tile, Grey grout.
Ceilings typically 4,500mm above FFL.
Brownfield ceiling heights as above to be maximum achievable as GDP. Mezzanine floor with viewing may dictate higher The Street ceiling.
CS1 - The Street, Friezes, perimeter margins, bulkheads - 'Gyproc Duraline MR' or 'Duraline' painted MF gypsum ceiling, RAL 9003 Signal or Brilliant White, matt finish.



CS3 - The Street - 'Armstrong Ultima + OP7666M' 1200 x 600mm tegular tile. Standard white, matt finish. Ceiling grid in white PPC 25mm tee.
P1 - Plasterboard walls - Decorated in emulsion paint matt finish RAL 9003 Signal or Brilliant White.
P2 - Painted joinery - Decorated in gloss paint semi matt finish RAL 9003 Signal or Brilliant White.
VS1 - Skirtings - 56mm timber (or MDF) skirting lacquer or semi gloss painted RAL 9003 Signal or Brilliant White to offices.

Consultation Point plan

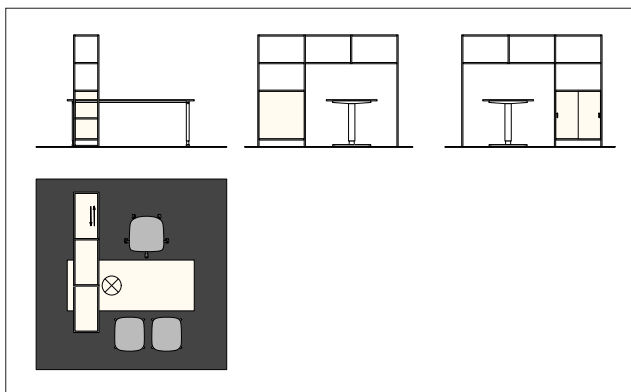


Reflected ceiling plan



 Dark grey square indicates loose laid rug (over tiles)  Floor box location

Consultation Point components plan and elevations



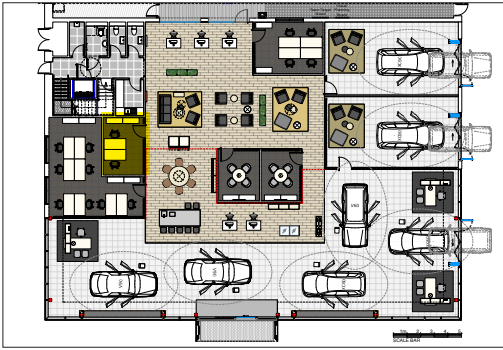



Datasheet 4.4 Internal Sales details

Do not scale from these drawings

4.4.9 Typical Offices

Location drawing extract from generic layout plan



 Detailed area

Equipment

All furniture items and fittings are supplied by Senab.

Please ensure adequate provision is made for power and data requirements in this area.

Finishes

P1 - Plasterboard walls - Decorated in emulsion paint matt finish RAL 9003 Signal or Brilliant White.

P2 - Painted joinery - Decorated in gloss paint semi matt finish RAL 9003 Signal or Brilliant White.

FT1 - Offices and meeting rooms - 5mm 'Interface Unity' 500 x 500mm carpet tile Monolithic laid - Colour 'Husk'.

CS4 - Suspended ceiling tiles - 'Armstrong Ultima +7674M' tegular tile 600 x 600mm or similar approved, lay in grid installation. RAL 9003 Signal or Brilliant White, exposed grid finished white.

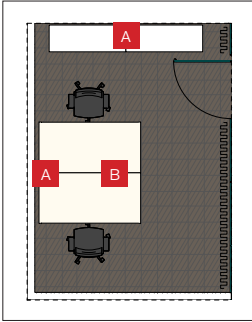
Option V1 – Consultation Offices and Sales rooms. Proprietary 'Komfort Polar or PolarTec' Frameless low iron glazed screen and glass door with ironmongery as required.

CS1 Suspended MF - Ceiling suspended MF, double layered plasterboard painted ceiling. RAL 9003 Signal or Brilliant White, matt finish.

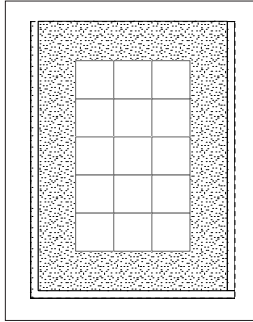
VS1 - Skirtings - 56mm timber (or MDF) skirting lacquer or semi gloss painted RAL 9003 Signal or Brilliant White to offices.

NB: Ceiling height typically 2,400mm above FFL.

Typical Managers' office plan

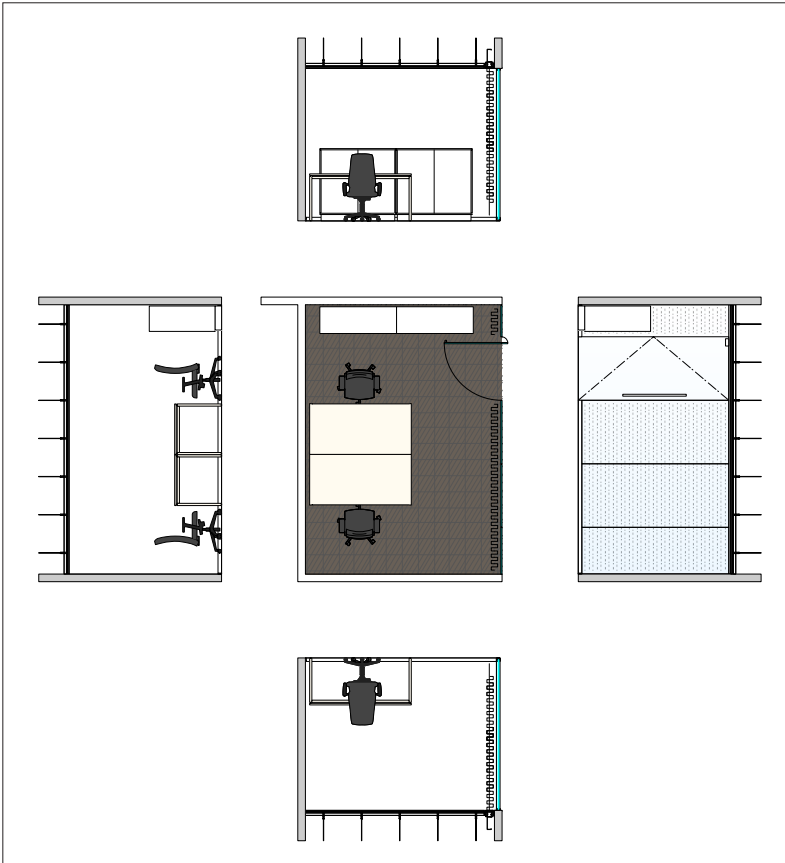


Reflected ceiling plan



A Wall box location
B Floor box location

Elevations





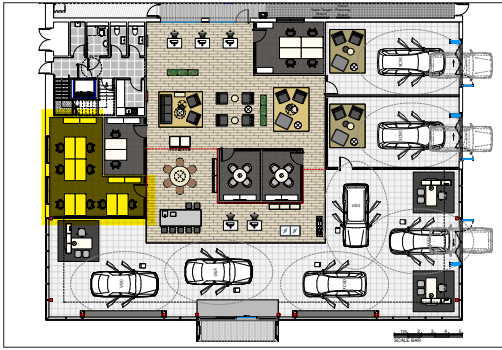
Datasheet 4.4 Internal Sales details

Do not scale from these drawings



4.4.10 Sales Consultants' Office

Location drawing extract from generic layout plan



Detailed area

Equipment

All furniture items and fittings are supplied by Senab.

Please ensure adequate provision is made for power and data requirements in this area.

Finishes

P1 - Plasterboard walls - Decorated in emulsion paint matt finish RAL 9003 Signal or Brilliant White.

P2 - Painted joinery - Decorated in gloss paint semi matt finish RAL 9003 Signal or Brilliant White.

FT1 - Offices and meeting rooms - 5mm 'Interface Unity' 500 x 500mm carpet tile Monolithic laid - Colour 'Husk'.

CS4 - Suspended ceiling tiles - 'Armstrong Ultima +7674M' board 600 x 600mm or similar approved, lay-in grid installation. RAL 9003 Signal or Brilliant White, exposed grid finished white.

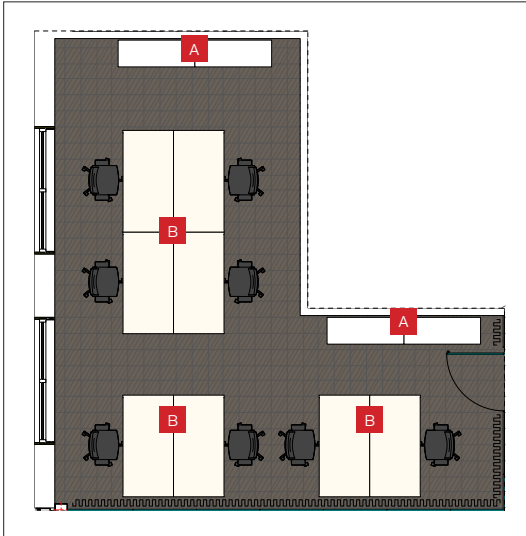
Option V1 - Consultation Offices and Sales rooms. Proprietary 'Komfort Polar or PolarTec' Frameless low iron glazed screen and glass door with ironmongery as required.

Frame colour - Frameless. Concealed top and bottom glazing channels PPC or lacquer white finish.

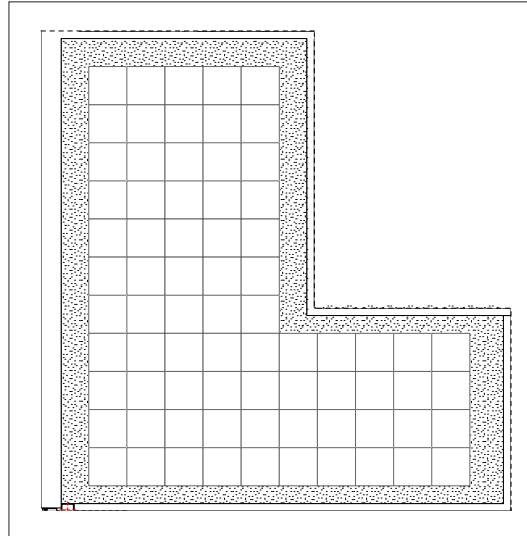
CS1 Suspended MF - Ceiling suspended MF, double layered plasterboard painted ceiling. RAL 9003 Signal or Brilliant White, matt finish.

VS1 - Skirtings - 56mm timber (or MDF) skirting lacquer or semi gloss painted RAL 9003 Signal or Brilliant White to offices.

Sales Consultants' office plan



Reflected ceiling plan



A Wall box location
B Floor box location

Elevations



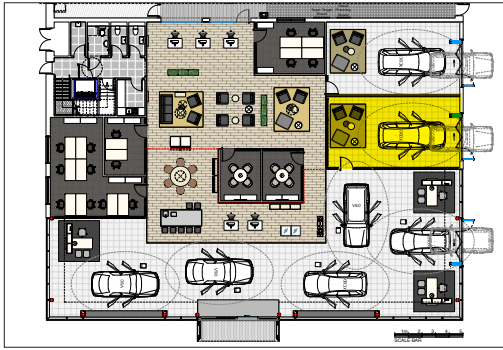


Datasheet 4.4 Internal Sales details

Do not scale from these drawings

4.4.11 Car Delivery Bay

Location Drawing extract from Generic Layout Plan



Detailed area

Equipment

All furniture items and fittings are supplied by Senab.

Please ensure adequate provision is made for power and data requirements in this area.

Finishes

V1 - Consultation Offices and Sales rooms. Proprietary 'Komfort Polar or PolarTec' Frameless low iron glazed screen and glass door with iron-mongery as required.

Frame colour - Frameless. Concealed top and bottom glazing channels PPC or lacquer white finish.

FC1 - 'Minoli C Stone 750R' 750 x 750 x 10mm tile, Grey grout.

Ceilings typically 2,800 / 3,000mm above FFL.

Brownfield ceiling heights as GDP. Mezzanine floor with viewing may dictate higher 'The Street' ceiling.

CS1 - The Street, Friezes, Perimeter Margins, Bulkheads - 'Gyproc Duraline MR' or 'Duraline' painted MF gypsum ceiling, White, matt finish.

CS3 - The Street - 'Armstrong Ultima +OP7666M' 600 x 1,200mm.

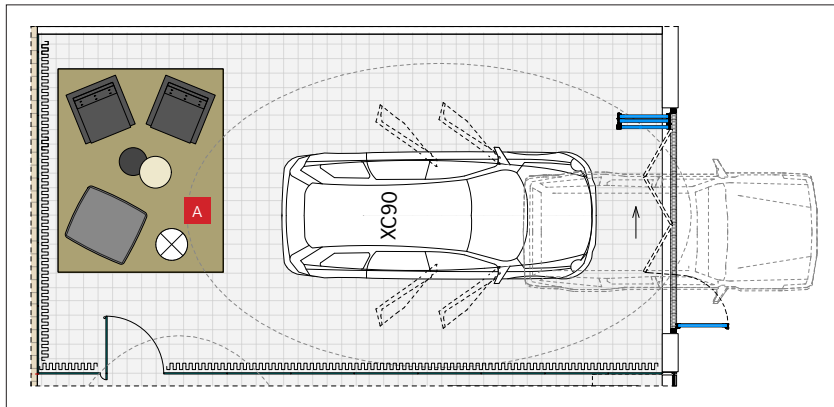
Ceilings to have edge 'D' details. Standard white, matt finish.

P1 - Plasterboard walls - Decorated in emulsion paint matt finish RAL 9003 Signal or Brilliant White.

P2 - Painted joinery - Decorated in gloss paint semi matt finish RAL 9003 Signal or Brilliant White.

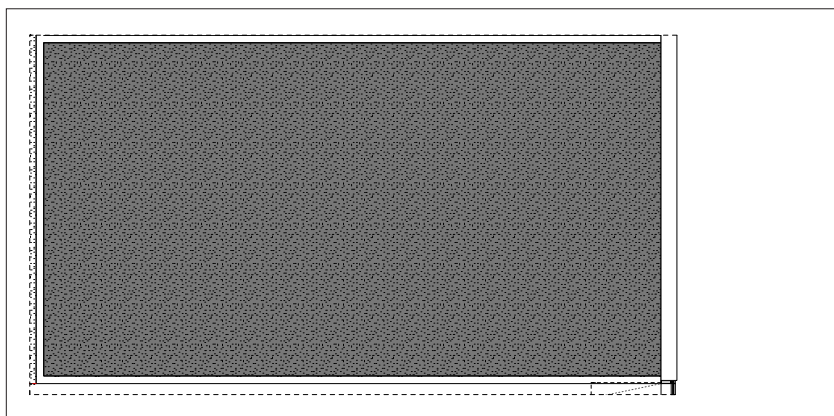
VS1 - Skirtings - 56mm Timber (or MDF) skirting lacquer or semi gloss painted RAL 9003 Signal or Brilliant White to offices.

Car Delivery Bay Plan

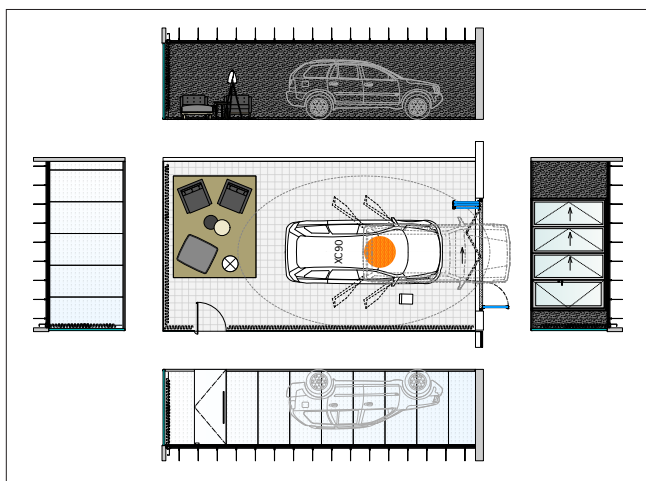


- Floor box
- Indicates 11kW charger

Reflected ceiling Plan



Elevations



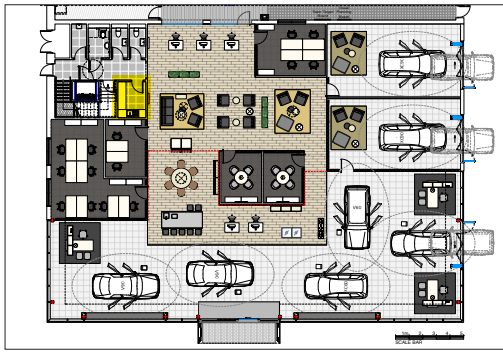



Datasheet 4.4 Internal Sales details

Do not scale from these drawings

4.4.12 Front of house kitchen facilities

Location Drawing extract from Generic Layout Plan



 Detailed area

Equipment

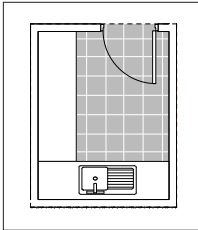
All furniture items and fittings to be supplied by the Retailer and same to advise contractors.
 Please ensure adequate provision is made for power and data requirements in this area.
 Please note that all finishes required to this area are to the Retailer's own specification - those listed below are for reference only.

Finishes

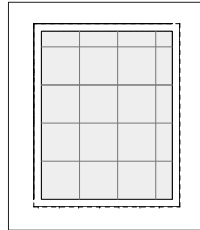
Kitchenette areas to include proprietary wall / sink unit with mixer tap and drainer along with above sink wall storage unit. Carcass to include under counter space for dishwasher and fridge.
 CT2 - Suspended Ceiling Tiles - To Kitchenette and Cleaner's cupboard - Non-brand specified or 'Armstrong Dune' 600 x 600mm; moisture resistant or equal approved, lay in grid system.
 M1 - Wall Tiling - 'Minoli Neve' 200 x 200mm white wall tile, matt, White grout.

FC3 - Staff toilets - 450 x 450mm stone tile with Grey grout or FV1 - vinyl sheet.
 Internal doors - Timber solid core door in aluminium frame with concealed hinges and ironmongery as required. Doors to be HW lipped edge finished to RAL 7037 Dark Grey.

Ground Floor - Staircase Plan



Ground Floor - Reflected ceiling Plan



Elevations



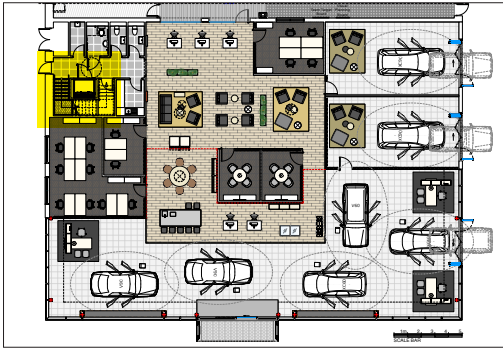


Datasheet 4.4 Internal Sales details

Do not scale from these drawings

4.4.13 Front of house staircase

Location Drawing extract from Generic Layout Plan



Detailed area

Equipment

All furniture items and fittings are supplied by Senab.

Please ensure adequate provision is made for power and data requirements in this area.

Finishes

Front of house – Precast (or reinforced) concrete stairs suitably lined (or polished-off shutter) concrete.

Open stringers to be finished with framed glazed balustrading with stainless steel posts and handrails – rails to continue on stairwell walls.

Closed stringers to be finished with stainless steel handrails (min. 50mm dia.) To Brand Guardian approval.

Treads to be 5mm 'Interface Unity' 500 x 500mm carpet tile Monolithic or Ashlar laid – Colour 'Husk', proprietary nosings and white painted MDF skirtings.

CS1 - The Street, Friezes, Perimeter Margins, Bulkheads – 'Gyproc Duraline MR' or 'Duraline' Painted MF gypsum ceiling, White, matt finish.

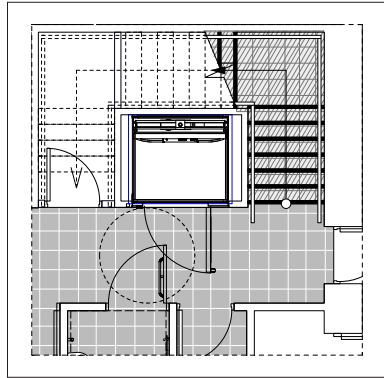
CS3 - The Street – 'Armstrong Ultima +7467M' 600 x 600mm.

P1 - Plasterboard walls - Decorated in emulsion paint matt finish RAL 9003 Signal or Brilliant White.

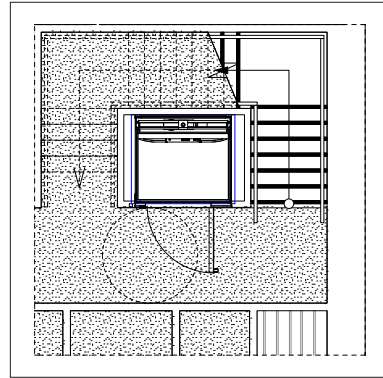
P2 - Painted joinery - Decorated in gloss paint semi matt finish RAL 9003 Signal or Brilliant White.

VS1 - Skirtings - 56mm Timber (or MDF) skirting lacquer or semi gloss painted RAL 9003 Signal or Brilliant White to offices.

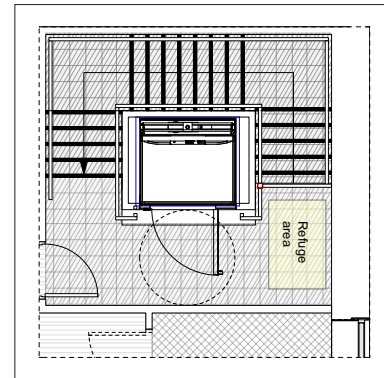
Ground Floor - Staircase Plan



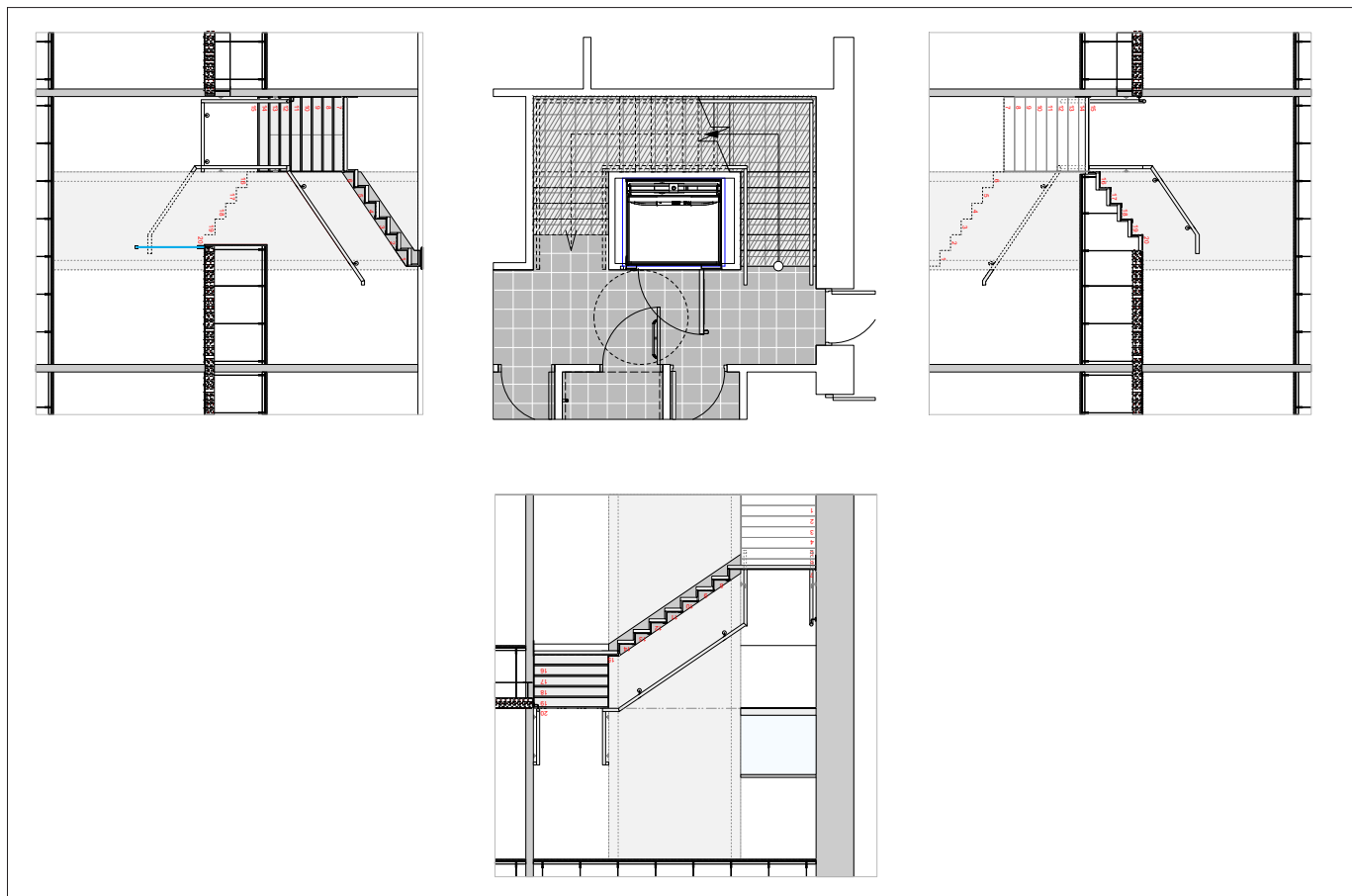
Ground Floor - Reflected ceiling Plan



First Floor - Staircase Plan



Typical plan and Elevations





Section 4.5

Internal Staff Area Details

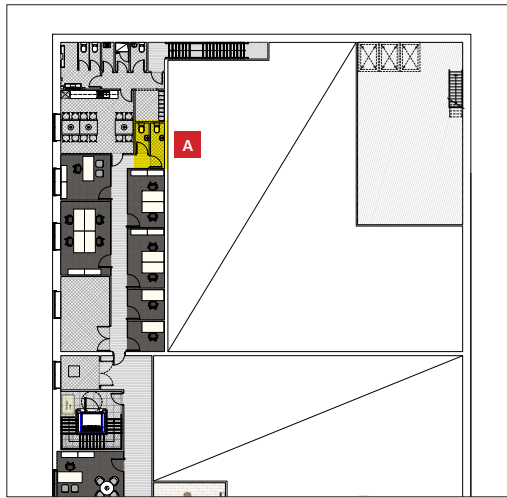



Datasheet 4.5 Internal Staff Area details

Do not scale from these drawings

4.5.1 Staff Toilets

Location Drawing extract from Generic Layout Plan



 Detailed area

Equipment

All furniture items and fittings to be supplied by the Retailer and same to advise contractors. Please ensure adequate provision is made for power and data requirements in this area. Please note that all finishes required to this area are to the Retailer's own specification - those listed below are for reference only.

Finishes

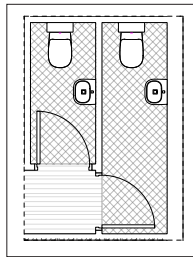
Kitchenette areas to include proprietary wall / sink unit with mixer tap and drainer along with above sink wall storage unit. Carcass to include under counter space for dishwasher and fridge. CT2 - Suspended Ceiling Tiles - To Kitchenette and Cleaner's cupboard - Non-brand specified or 'Armstrong Dune' 600 x 600mm; moisture resistant or equal approved, lay in grid system.

M1 - Wall Tiling - 'Minoli Neve' 200 x 200mm white wall tile, matt, White grout.

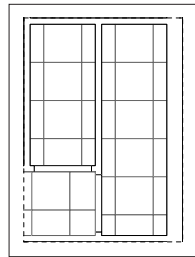
FC3 - Staff toilets - 450 x 450mm stone tile with Grey grout or FV1 - vinyl sheet.

Internal doors - Timber solid core door in aluminium frame with concealed hinges and ironmongery as required. Doors to be HW lipped edge finished to RAL 7037 Dark Grey.

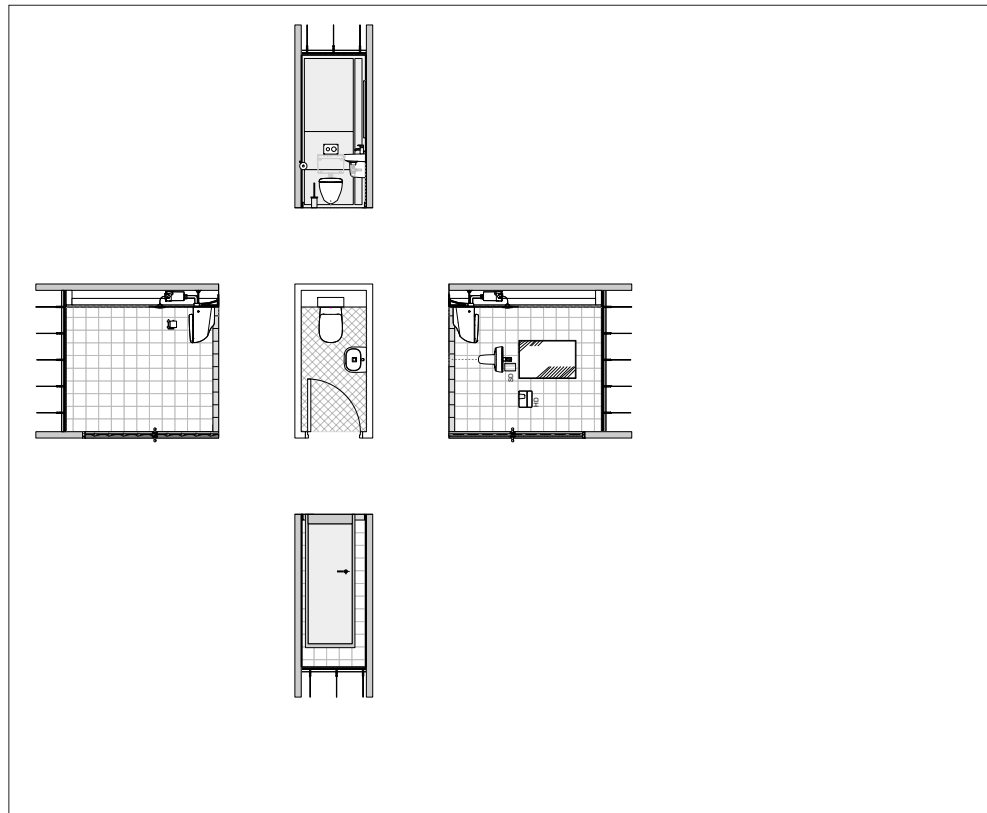
Staff Toilets Plan



Reflected ceiling Plan



Typical Plan and Elevations



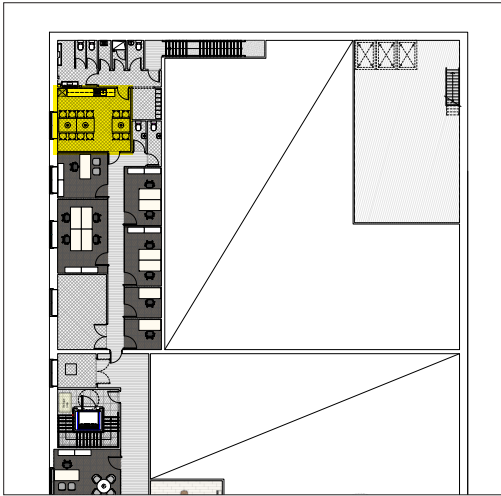


Datasheet 4.5 Internal Staff Area details

Do not scale from these drawings

4.5.2 Staff and Technicians' Canteen

Location Drawing extract from Generic Layout Plan



Detailed area

Equipment

All furniture items and fittings to be supplied by the Retailer and same to advise contractors. Please ensure adequate provision is made for power and data requirements in this area. Please note that all finishes required to this area are to the Retailer's own specification - those listed below are for reference only.

Finishes

Canteen areas to include proprietary wall / sink unit with mixer tap and drainer along with above sink wall storage unit. Carcass to include under counter space for dishwasher and fridge.

Staff Canteen:

'Armstrong Dune' 600 x 600mm moisture resistant lay in grid system. Standard white.
CT2 - Suspended ceiling tiles - To Kitchenette and Cleaner's cupboard - Non-brand specified or

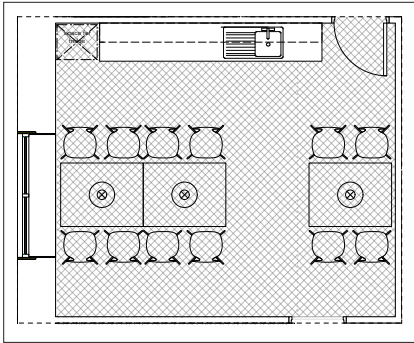
'Armstrong Dune' 600 x 600mm; moisture resistant or equal approved, lay in grid system. Colour; Standard white.

M1 - Wall tiling - 'Minoli Neve' 200 x 200mm white wall tile, matt, White grout.

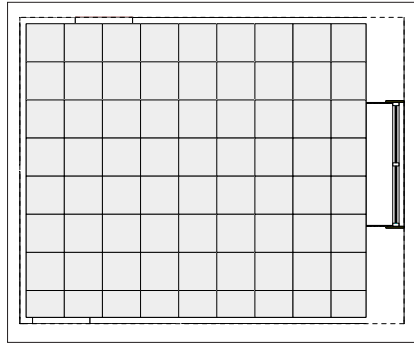
FV1 - Grey sheet vinyl with coved skirting.

Internal doors - Timber solid core door in aluminium frame with concealed hinges and ironmongery as required. Doors to be HW lipped edge finished to RAL 7037 Dark Grey.

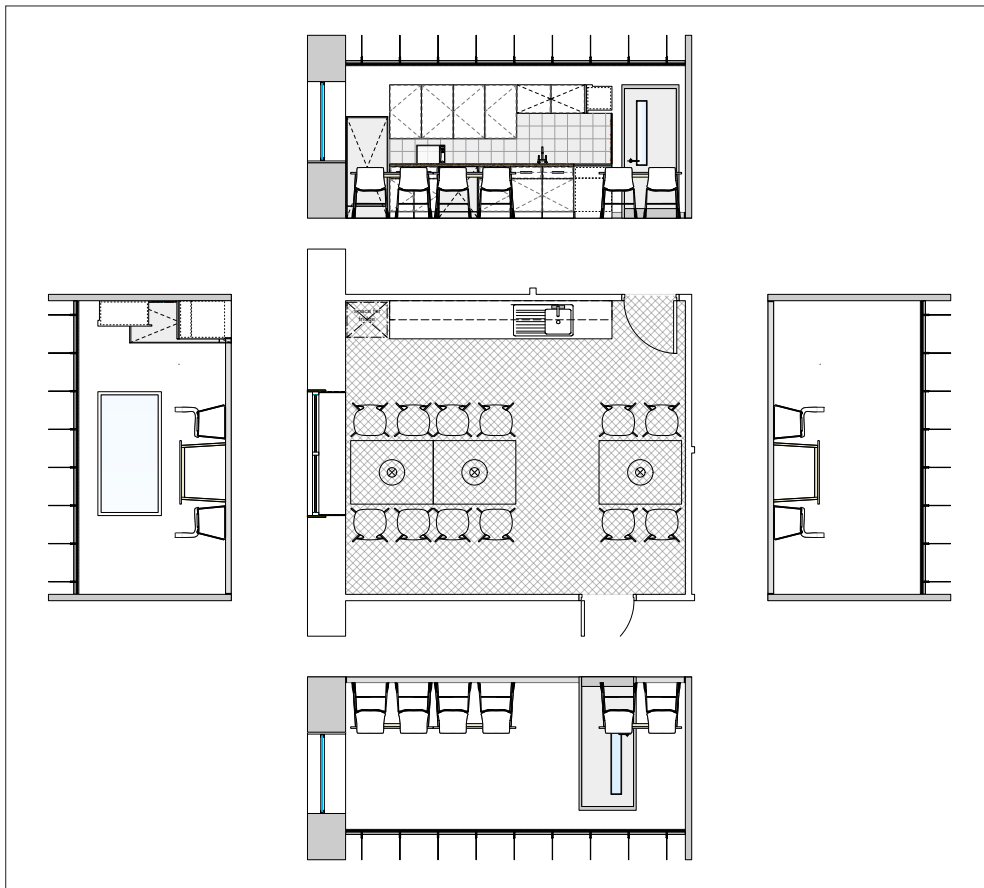
Technicians' Rooms Plan



Reflected ceiling Plan



Typical Plan and Elevations



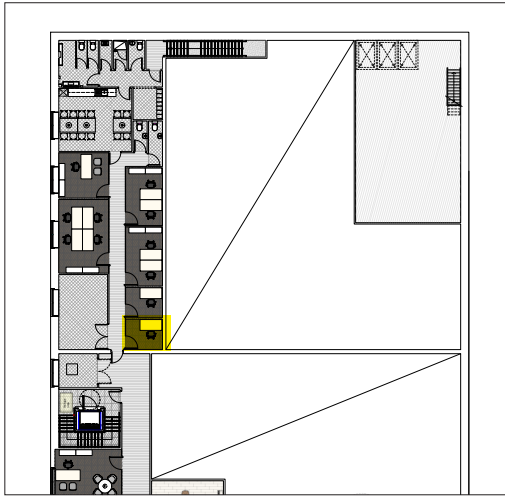



Datasheet 4.5 Internal Staff Area details

Do not scale from these drawings

4.5.3 eLearning Room

Location Drawing extract from Generic Layout Plan



 Detailed area

Equipment

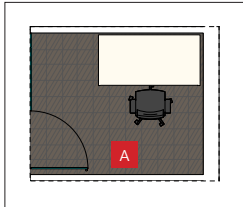
All furniture items and fittings to be supplied by the Retailer and same to advise contractors. Please ensure adequate provision is made for power and data requirements in this area. Please note that all finishes required to this area are to the Retailer's own specification - those listed below are for reference only.

Finishes

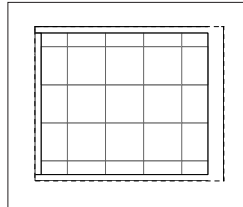
P1 - Plasterboard walls - Decorated in emulsion paint matt finish RAL 9003 Signal or Brilliant White.
 P2 - Painted joinery - Decorated in gloss paint semi matt finish RAL 9003 Signal or Brilliant White.
 FT1 - Offices and meeting rooms - 5mm 'Interface Unity' 500 x 500mm carpet tile Monolithic or Ashlar laid - Colour 'Husk'.

CS4 - Suspended ceiling tiles - 'Armstrong Ultima +7674M' tegular tile 600 x 600mm or similar approved, lay in grid installation. RAL 9003 Signal or Brilliant White, exposed grid finished white.
 Option V1 - Consultation Offices and Sales rooms. Proprietary 'Komfort Polar or PolarTec' Frameless Optical White low iron glazed screen and glass door with ironmongery as required.
 VS1 - Skirtings - 56mm Timber (or MDF) skirting lacquer or semi gloss painted RAL 9003 Signal or Brilliant White to offices.

eLearning Room Plan

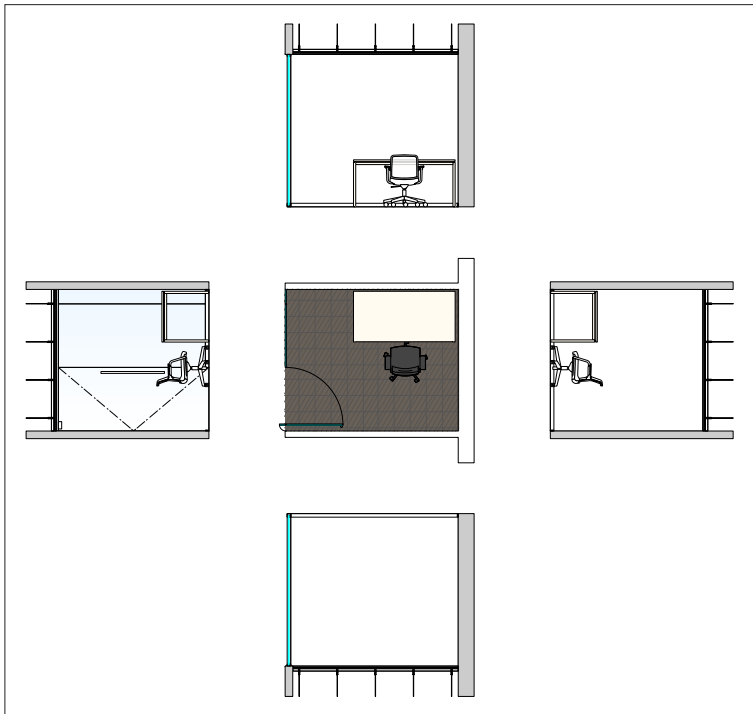


Reflected ceiling Plan



 Floor box

Typical Plan and Elevations





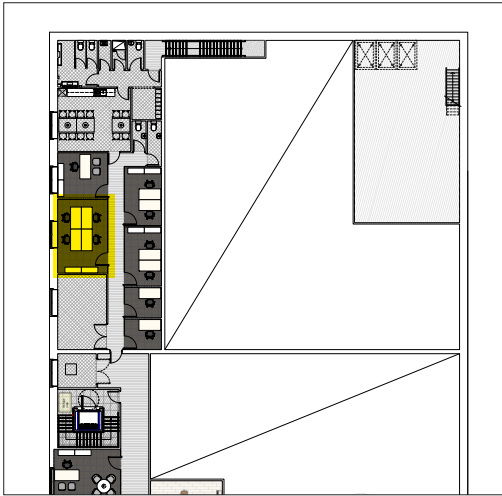
Datasheet 4.5 Internal Staff Area details

Do not scale from these drawings



4.5.4 Typical Office

Location Drawing extract from Generic Layout Plan



Detailed area

Equipment

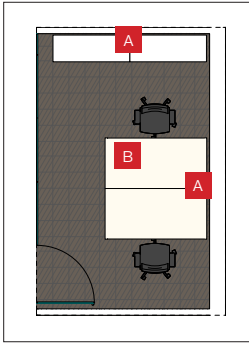
All furniture items and fittings to be supplied by the Retailer and same to advise contractors.
 Please ensure adequate provision is made for power and data requirements in this area.
 Please note that all finishes required to this area are to the Retailer's own specification - those listed below are for reference only.

Finishes

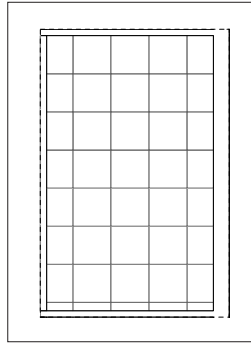
P1 - Plasterboard walls - Decorated in emulsion paint matt finish RAL 9003 Signal or Brilliant White.
 P2 - Painted joinery - Decorated in gloss paint semi matt finish RAL 9003 Signal or Brilliant White.
 FT1 - Offices and meeting rooms - 5mm 'Interface Unity' 500 x 500mm carpet tile Monolithic or Ashlar laid - Colour 'Husk'.

CS4 - Suspended ceiling tiles - 'Armstrong Ultima +7674M' tegular tile 600 x 600mm or similar approved, lay in grid installation. RAL 9003 Signal or Brilliant White, exposed grid finished white.
 Option V1 - Consultation Offices and Sales rooms. Proprietary 'Komfort Polar or PolarTec' Frameless Optical White low iron glazed screen and glass door with ironmongery as required.
 VS1 - Skirtings - 56mm Timber (or MDF) skirting lacquer or semi gloss painted RAL 9003 Signal or Brilliant White to offices.

Typical Office Plan



Reflected ceiling Plan



- Wall box
- Floor box

Typical Plan and Elevations



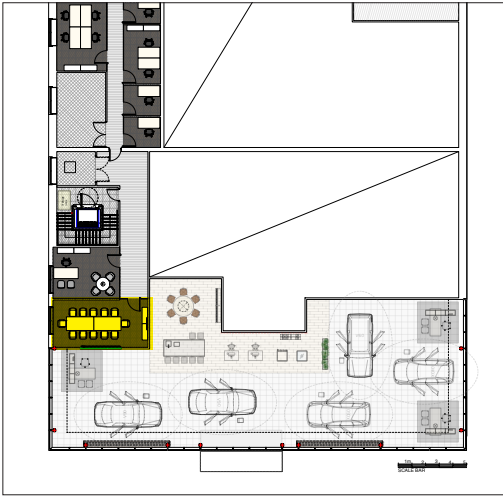


Datasheet 4.5 Internal Staff Area details

Do not scale from these drawings

4.5.5 Meeting Room

Location Drawing extract from Generic Layout Plan



Detailed area

Equipment

All furniture items and fittings to be supplied by the Retailer and same to advise contractors. Please ensure adequate provision is made for power and data requirements in this area. Please note that all finishes required to this area are to the Retailer's own specification - those listed below are for reference only.

Finishes

P1 - Plasterboard walls - Decorated in emulsion paint matt finish RAL 9003 Signal or Brilliant White.

P2 - Painted joinery - Decorated in gloss paint semi matt finish RAL 9003 Signal or Brilliant White.

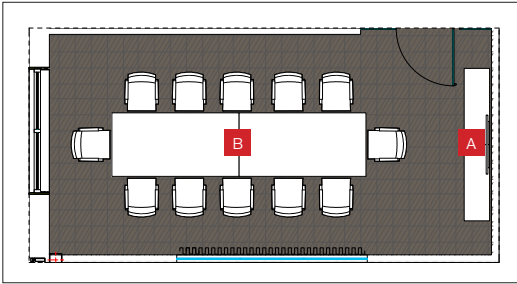
FT1 - Offices and meeting rooms - 5mm 'Interface Unity' 500 x 500mm carpet tile Monolithic or Ashlar laid - Colour 'Husk'.

CS4 - Suspended ceiling tiles - 'Armstrong Ultima +7674M' tegular tile 600 x 600mm or similar approved, lay in grid installation. RAL 9003 Signal or Brilliant White, exposed grid finished white.

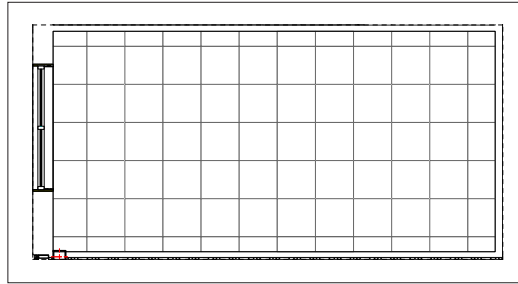
Option V1 - Consultation Offices and Sales rooms. Proprietary 'Komfort Polar or PolarTec' Frameless Optical White low iron glazed screen and glass door with ironmongery as required.

VS1 - Skirtings - 56mm Timber (or MDF) skirting lacquer or semi gloss painted RAL 9003 Signal or Brilliant White to offices.

Meeting Room Plan

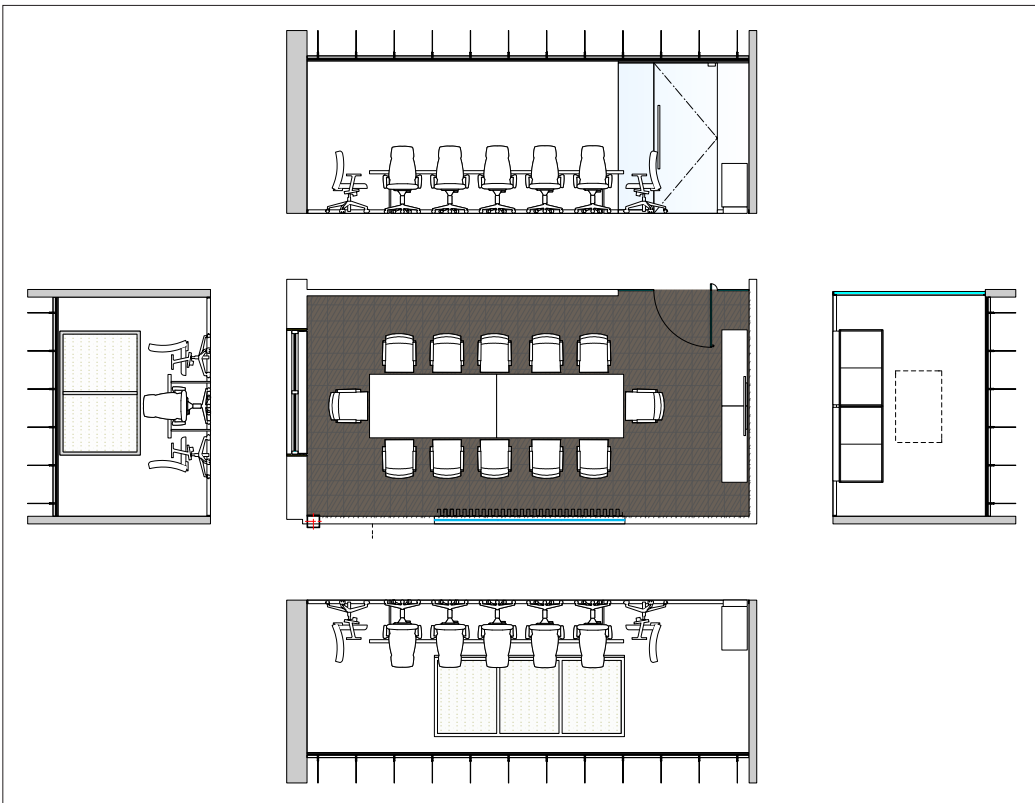


Reflected ceiling Plan



A Wall box
B Floor box

Typical Plan and Elevations



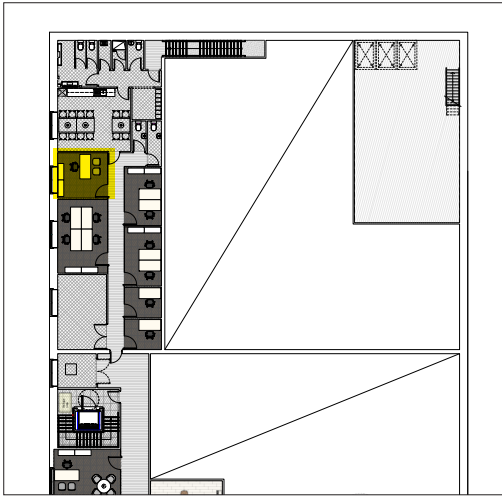


Datasheet 4.5 Internal Staff Area details

Do not scale from these drawings

4.5.6 Typical Manager's office

Location Drawing extract from Generic Layout Plan



Detailed area

Equipment

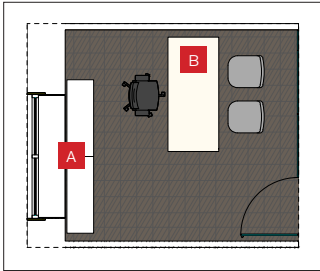
All furniture items and fittings to be supplied by the Retailer and same to advise contractors.
Please ensure adequate provision is made for power and data requirements in this area.
Please note that all finishes required to this area are to the Retailer's own specification - those listed below are for reference only.

Finishes

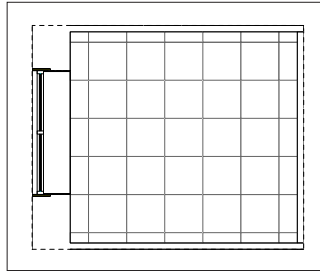
P1 - Plasterboard walls - Decorated in emulsion paint matt finish RAL 9003 Signal or Brilliant White.
P2 - Painted joinery - Decorated in gloss paint semi matt finish RAL 9003 Signal or Brilliant White.
FT1 - Offices and meeting rooms - 5mm 'Interface Unity' 500 x 500mm carpet tile Monolithic or Ashlar laid - Colour 'Husk'.

CS4 - Suspended ceiling tiles - 'Armstrong Ultima +7674M' tegular tile 600 x 600mm or similar approved, lay in grid installation. RAL 9003 Signal or Brilliant White, exposed grid finished white.
Option V1 - Consultation Offices and Sales rooms. Proprietary 'Komfort Polar or PolarTec' Frameless Optical White low iron glazed screen and glass door with ironmongery as required.
VS1 - Skirtings - 56mm Timber (or MDF) skirting lacquer or semi gloss painted RAL 9003 Signal or Brilliant White to offices.

Typical Office Plan

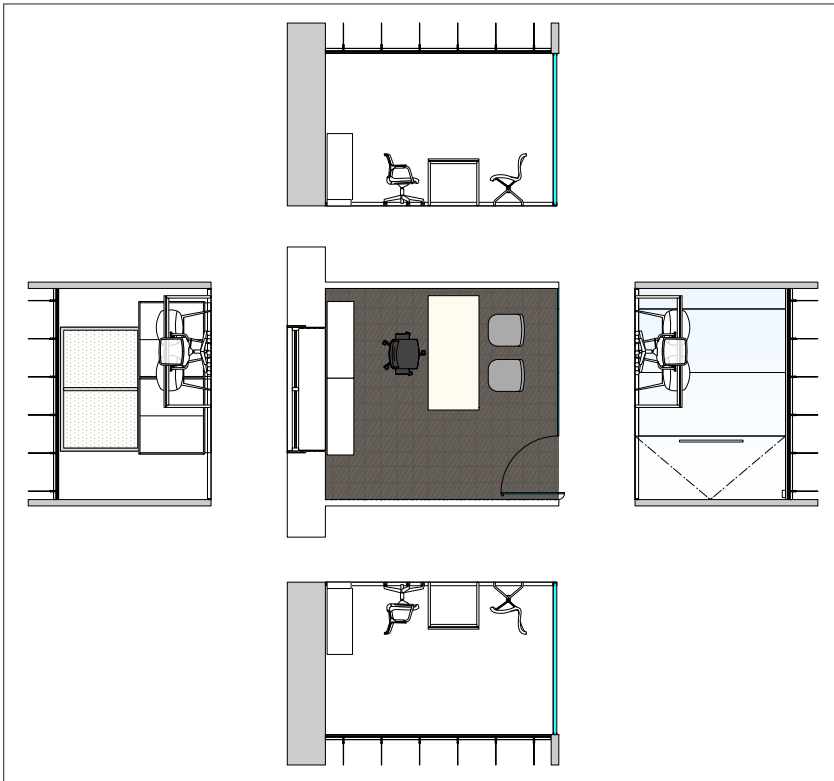


Reflected ceiling Plan



A Wall box
B Floor box

Typical Plan and Elevations



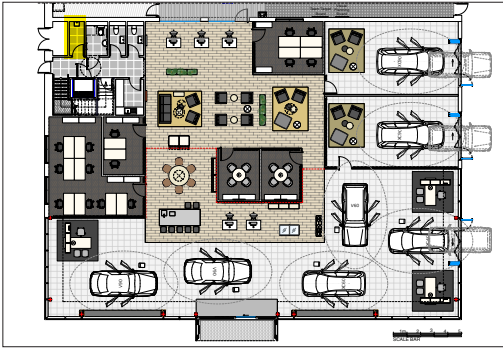



Datasheet 4.5 Internal Staff Area details

Do not scale from these drawings

4.5.7 Cleaners' Cupboard

Location Drawing extract from Generic Layout Plan



 Detailed area

Equipment

All furniture items and fittings to be supplied by the Retailer and same to advise contractors.

Please ensure adequate provision is made for power and data requirements in this area.

Please note that all finishes required to this area are to the Retailer's own specification - those listed below are for reference only.

Finishes

P1 - Plasterboard walls - Decorated in emulsion paint matt finish RAL 9003 Signal or Brilliant White.

P2 - Painted joinery - Decorated in gloss paint semi matt finish RAL 9003 Signal or Brilliant White.

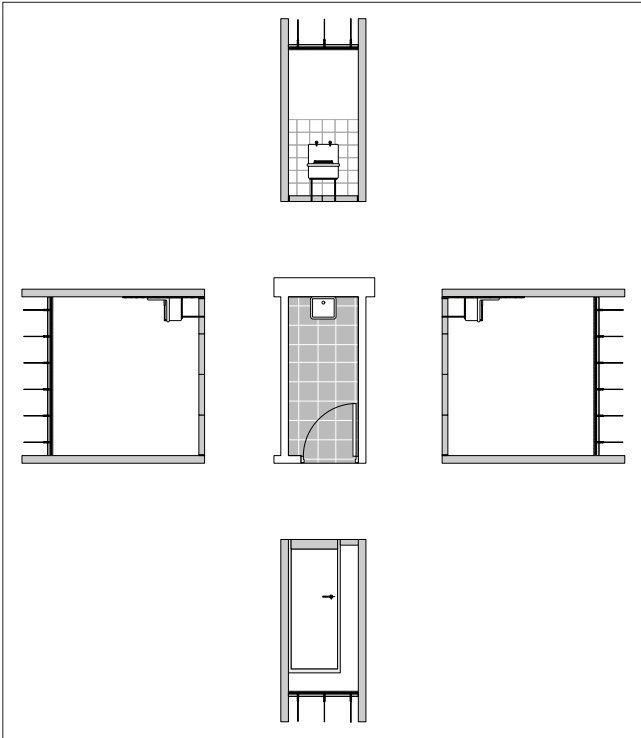
FT1 - Offices and meeting rooms - 5mm 'Interface Unity' 500 x 500mm carpet tile Monolithic or Ashlar laid - Colour 'Husk'.

CS4 - Suspended ceiling tiles - 'Armstrong Ultima +7674M' tegular tile 600 x 600mm or similar approved, lay in grid installation. RAL 9003 Signal or Brilliant White, exposed grid finished white.

Option V1 - Consultation Offices and Sales rooms. Proprietary 'Komfort Polar or PolarTec' Frameless Optical White low iron glazed screen and glass door with ironmongery as required.

VS1 - Skirtings - 56mm Timber (or MDF) skirting lacquer or semi gloss painted RAL 9003 Signal or Brilliant White to offices.

Typical Plan and Elevations



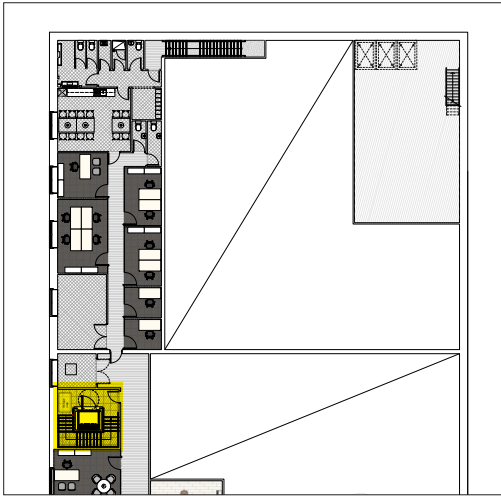


Datasheet 4.5 Internal Staff Area details

Do not scale from these drawings

4.5.8 Back of House typical staircase

Location Drawing extract from Generic Layout Plan



 Detailed area

Equipment

All furniture items and fittings to be supplied by the Retailer and same to advise contractors. Please ensure adequate provision is made for power and data requirements in this area. Please note that all finishes required to this area are to the Retailer's own specification - those listed below are for reference only.

Finishes

Back of house (or secondary escape) – Precast (or reinforced) concrete stairs or galvanised structural steel stairs.
 Open tread, chequer plate non slip steel treads, primed and painted finish.
 Proprietary steel balustrading with painted steel posts and handrails – rails to continue on stairwell walls.

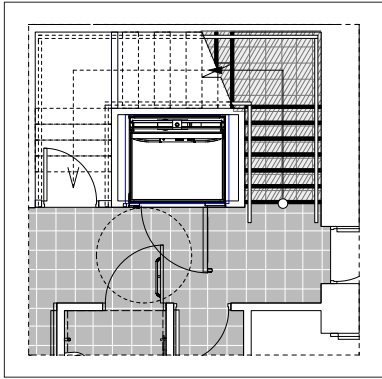
P1 - Plasterboard walls - Decorated in emulsion paint matt finish RAL 9003 Signal or Brilliant White.

P2 - Painted joinery - Decorated in gloss paint semi matt finish RAL 9003 Signal or Brilliant White.

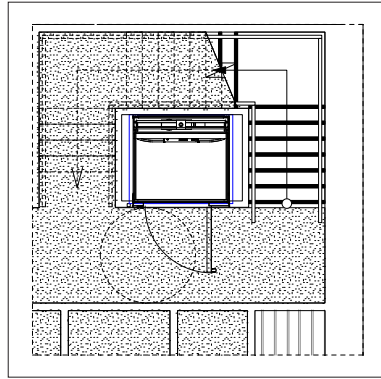
VS1 - Skirtings - 56mm Timber (or MDF) skirting lacquer or semi gloss painted RAL 9003 Signal or Brilliant White to offices.

CT1 - Suspended Ceiling Tiles - To back of house areas - Non-brand specified or 'Armstrong Dune' 600 x 600 mm or equal approved. Lay in grid system. Colour; Standard white.

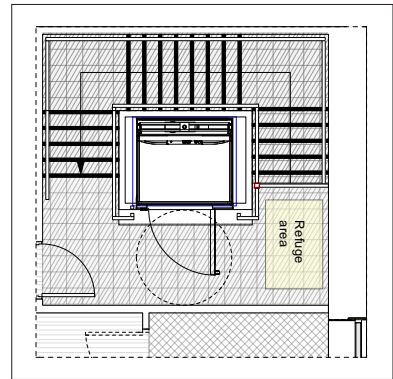
Ground floor - Staircase Plan



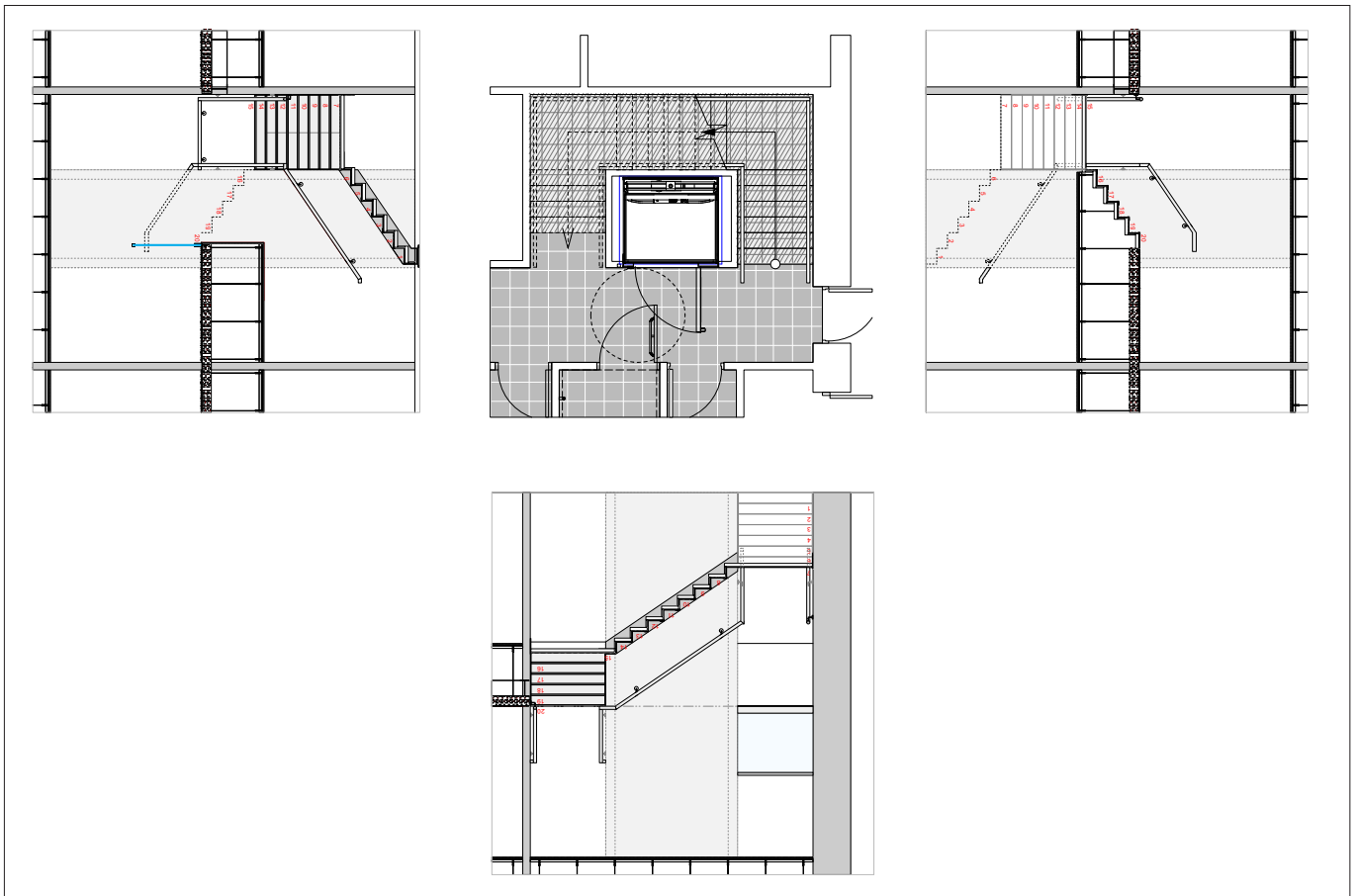
Ground Floor - Reflected ceiling Plan



First floor - Staircase Plan



Elevations



End of Section